



CAPACITOR UNIT

Catalog Number: CAP-2



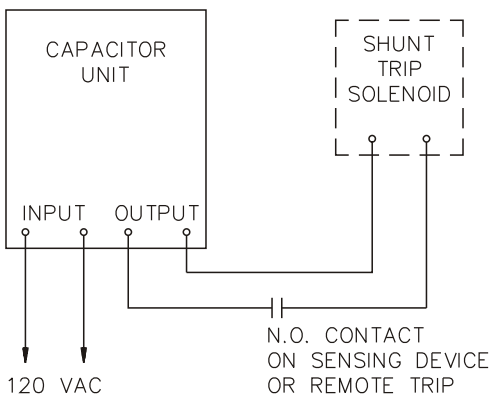
Originally designed for use with a Boltswitch Shunt Trip Operator, unit may be found suitable for use with other equipment as well. It stores enough energy to operate a shunt trip coil after the loss of control power.

This device employs a full wave rectifier and a capacitor. Resistors limit charge and discharge rates. During normal operation, control power is directed through the unit and charges the capacitor. Upon the loss of control power, a relay switches the output from the normal source to the capacitor. Restoration of control power resets the unit.

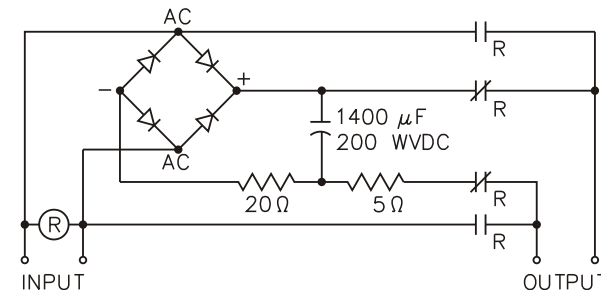
- Size: 5" W x 7" H x 2.75" D
approximate net weight: 1.5 lbs.
- Mounting: Hole diameter: .25
Hole spacing: 4.25" W x 6.25" H
Panel thickness: .38"
Min. .5" clearance through air required between conductors and dead metal.
- Input: 120 VAC
Relay Pick-up: approximately 85 V
Relay Drop-out: approximately 72 V
- Output: Designed to operate a 120 VAC shunt trip solenoid on a switch or breaker with:
Max. Inrush Current: 15 Amps
Max. Sealed Current: 10 Amps

CAUTION:
This device stores energy. The hazard of electric shock may remain with power off.

Tests: Tested in accordance with UL 508, "Industrial Control Equipment" and UL and C-UL Listed under File No. E65261. C-UL is a listing mark for products used in Canada.



EXTERNAL WIRING



INTERNAL WIRING