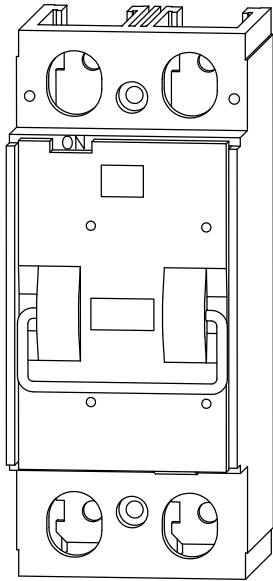
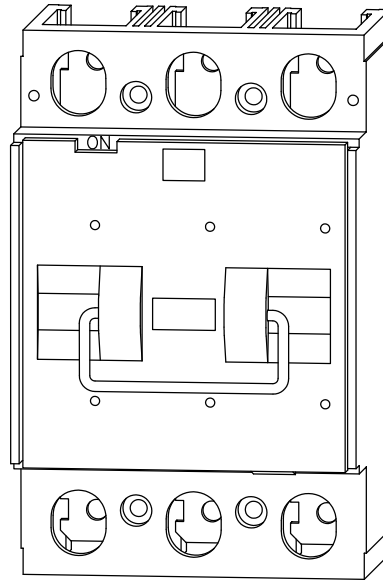


boltswitch

100 - 200 AMP PULLOUT SWITCH (200 AMP FRAME SIZE)

2-POLE3-POLE

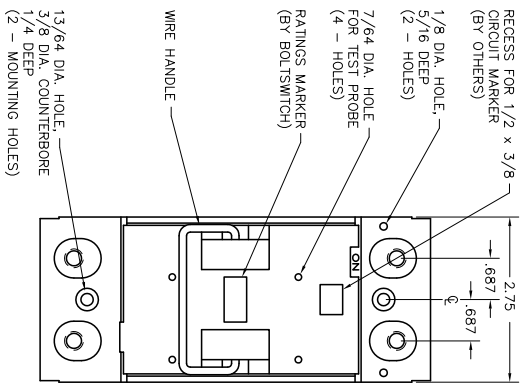
VOLTAGE	AMPACITY	CATALOG NUMBERS	
		2-POLE*	3-POLE
240 AC/125 DC	100	PTL223	PTL323
	200	PT224	PT324
600 AC	200	PT264	PT364

* 2-pole units are also available in 3-pole construction with center pole omitted. Catalog numbers are the same as 3-pole with suffix "-2P". (Example: PT324-2P)

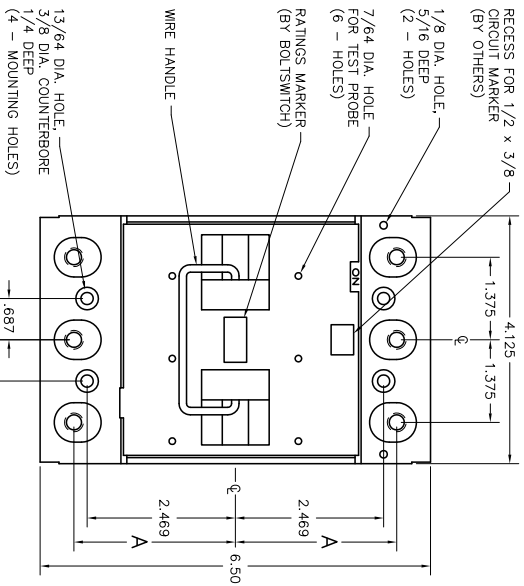
APPLICATION: These devices are load-break switches designed primarily for installation in panelboards, control panels, and meter banks. They receive Class T fuses.

TESTS: Tested in accordance with UL 1429, and listed as "Pullout Switches" under file No. E131005. UL and C-UL listed for use on circuits having available fault currents of 200,000 RMS symmetrical amperes. DC Rated switches are UL and C-UL Listed for use on circuits capable of delivering 50,000 amperes at 125 VDC.

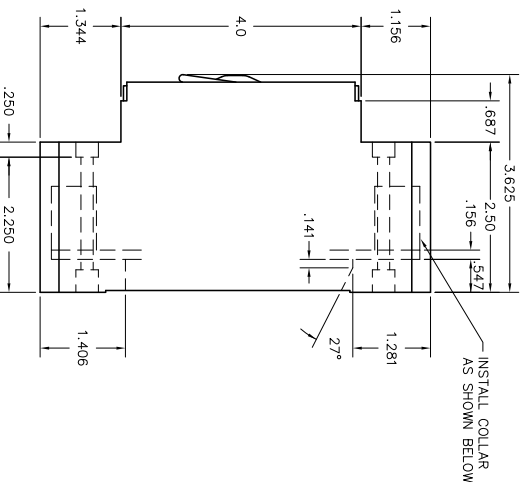
FEATURES:



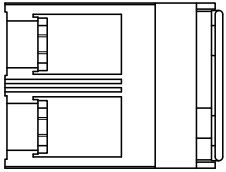
2 - POLE



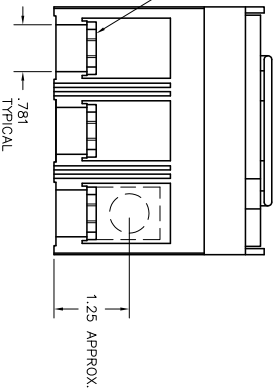
3 - POLE



SIDE VIEW
(TYPICAL FOR ALL UNITS)



7/8" WIDE CONDUCTOR
HOLE (TYPICAL)
100 AMP CONDUCTORS
HAVE GROOVES TO ACCEPT
TK100P TERMINALS KITS

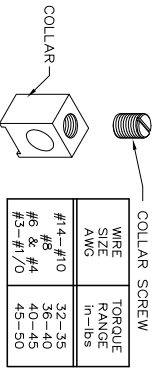


.781
TYPICAL

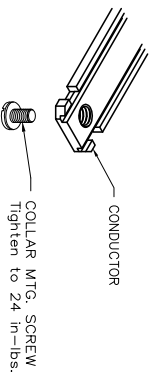
1.25 APPROX.

CLASS T FUSIBLE			
VOLTAGE	AMPACITY	CATALOG NUMBER	
		2 - POLE*	3 - POLE
240AC/125DC	100	PTL223	PTL323
	200	PT224	PT324
600 AC	200	PT264	PT364
	200	PT264	PT364

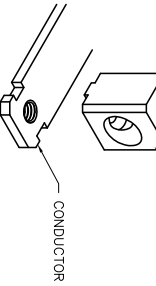
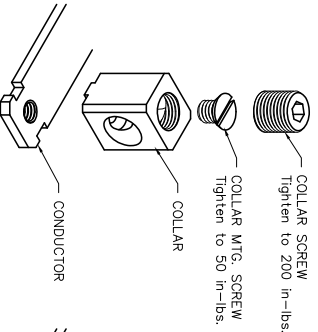
* 2 POLE UNITS ARE ALSO AVAILABLE IN 3 POLE CONSTRUCTION WITH CENTER POLE OMITTED. CATALOG NUMBERS ARE THE SAME AS 3-POLE WITH SUFFIX "-2P". (EXAMPLE: PT324-2P)



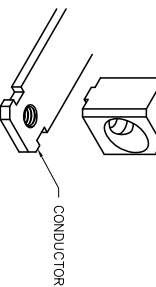
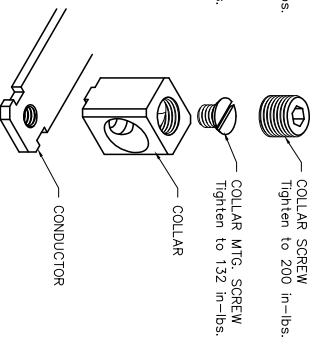
WIRE SIZE AWG	TORQUE RANGE In.-lbs.
#14-#10	32-35
#6 & #4	40-45
#3-#1/0	45-50



CAT. NO. TK100P
(Wire Range 14 to 1/0 AWG AL9CU)



CAT. NO. TK160P
(Wire Range 3/0 to 6 AWG AL9CU)



CAT. NO. TK200P
(Wire Range 3/0 to 300 kcmil AL7CU)

NOTE:
240 VOLT PULLOUTS ARE DESIGNED TO RECEIVE 300 VOLT CLASS T FUSES.
600 VOLT PULLOUTS ARE DESIGNED TO RECEIVE 600 VOLT CLASS T FUSES.
FUSES ARE NOT INCLUDED WITH ANY UNITS.

100-200 AMP PULLOUT SWITCHES
(200 AMP FRAME SIZE)

SCALE:	APPROVED BY:	DRAWN BY:	REUSED:
DATE: 9-13-88		JWE	6

REV 6 10-3-83 JWE NEW WIRE & TORQUE RATINGS FOR TK160P & TK200P- REMOVED 480V/277 UNITS
REV 5 9-1-84 WJE UPDATED DC RATING
REV 4 3-26-83 JWE ADDED DC RATINGS
REV 3 5-27-82 JWE ADDED 275 WDE 2 - POLE
REV 2 5-27-82 JWE ADDED 100 AMP- 240 VOLT UNIT
REV 1 1-22-80 JWE

boltswitch, inc.
DRAWING NUMBER O-1352
CRYSTAL LAKE, ILLINOIS 60014