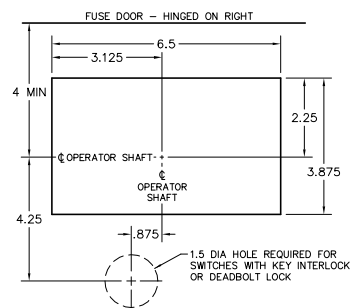
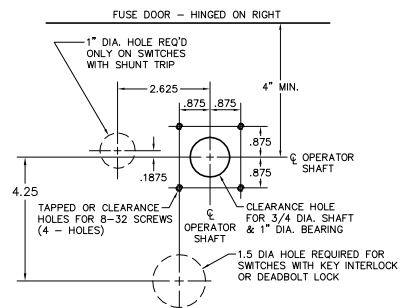


VOLTS	AMPS	CATALOG NUMBER *			NET WEIGHT (LBS)			A	B2	B3	B4	C2	C3	C4	D	E	F	G	H	J	K	L	M	N	P	R	R4	S	T	U	V	RECOMMENDED LUGS
		2-P	3-P	4-P	2-P	3-P	4-P																									
240 AC	800	L227	L327	L427	43	58	73	23.75	10.25	15.75	21.25	16.5	22	27.5	11.38	4.75	1.5	6.87	4.87	2.87	1.06	4.25	.75	1.5	5.5	9.25	14.75	.31	1.87	.25	48	ILSCO XTA-600 #2-600 MCM OR (2) 3/0-250 MCM CU-AL
	1200	L228	L328	L428	68	93	118	27	11.87	17.87	23.87	18	24	30	11.62	4.75	1.38	7.18	6.31	3.06	1	5.12	1.5	2.12	6	10.38	16.38	.38	1.87	.5	60	ILSCO D1459 (2) #2-600 MCM CU-AL
600 AC/DC	400	J265	J365	J465	36	47	58	20.5	9.62	14.12	18.62	14.5	19	23.5	10.38	3.75	1.12	6.38	5.12	3.5	1.5	3.87	1.12	1.62	4.5	8.38	12.87	.25	1.25	.25	38	ILSCO XTA-600 #2-600 MCM OR (2) 3/0-250 MCM CU-AL
	600	J266	J366	J466	43	56	69	23	10.62	15.62	20.62	15	20	25	10.38	3.38	1	7.62	5.38	3.81	.87	4.5	1.25	2	5	9.25	14.25	.25	1.87	.25	48	ILSCO D1459 (2) #2-600 MCM CU-AL
600 AC	800	L267	L367	L467	52	68	84	25	11.5	17	22.5	16.5	22	27.5	11.38	4	1	8.12	4.87	4.12	1.06	4.75	1.25	2	5.5	9.75	15.25	.31	1.87	.25	48	T & B TYPE GR (3) #2-600 MCM CU-AL
	1200	L268	L368	L468	76	102	128	29	13	19	25	18	24	30	11.62	3.62	1.38	9.18	6.31	5.06	1	5.12	1.5	2.12	6	10.38	16.38	.38	1.87	.5	60	T & B TYPE GR OR ILSCO D1281 (4) #2-600 MCM CU-AL

*SUFFIX "WOL": WITHOUT TERMINAL LUGS SUFFIX "ST": SHUNT TRIP OPERATOR



RECOMMENDED FRONT CUT-OUT
THIS RECTANGULAR CUT-OUT IS REQUIRED WHEN USING OPTIONAL E.U.S.E.R.C. PADLOCK CLIP



ALTERNATE FRONT CUT-OUT

KEY INTERLOCK SPECIFICATIONS
KEY INTERLOCK SPECIFICATIONS FOR SWITCHES EQUIPPED WITH KEY INTERLOCK PROVISIONS ARE:
.375 BOLT PROJECTION WHEN WITHDRAWN
- KIRK TYPE B
- SUPERIOR TYPE B6003

- NOTES:**
- BOND IS PROVIDED BY MEANS OF #6 COPPER WIRE BETWEEN OPERATOR AND MOUNTING SCREW.
 - ARC CHUTES AND BARRIERS ARE OMITTED ON 240 V. SWITCHES. RIGHT SIDE BARRIER MAY BE OMITTED FOR 600 VOLT AC.

400-1200 AMP 240 & 600 VOLT CLASS J & L FUSIBLE SWITCHES

SCALE:	APPROVED BY:	DRAWN BY: J/JWE
DATE: 8-21-84		REVISED 10

boltswitch, inc.
CRYSTAL LAKE, ILLINOIS 60014

DRAWING NUMBER
O-1009

REV. 10 2-23-06 JWE UPDATED TO SHOW CURRENT HANDLE
REV. 9 5-31-00 JAE KEY INT REVISED DUE TO NEW ST-8
REV. 8 4-23-98 JWE ADDED DC RATINGS
REV. 7 1-26-98 JWE OPT. R. SIDE BARRIER, U DIM. CORRECTED
REV. 6 10-21-97 JWE 1200 A CUT-OUT WAS 7.5 x 3.875
REV. 5 10-8-97 JWE J366 WAS SHOWN IN CHART AS J326
REV. 4 7-30-97 RME D & U DIMENSIONS CORRECTED
REV. 3 7-9-97 RME RECOMMENDED FRONT CUT-OUTS ENLARGED
REV. 2 11-19-96 JWE REDRAWN ON CAD, ADDED RIGHT BARRIER TO 400 & 600 AMP