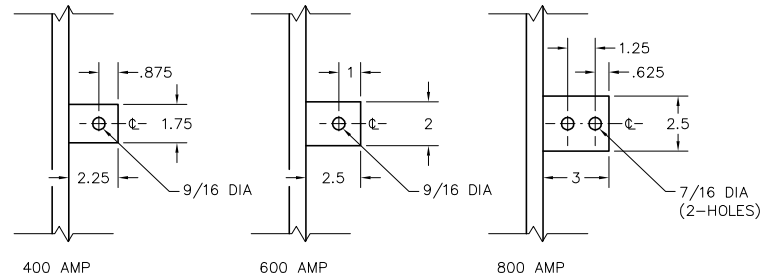
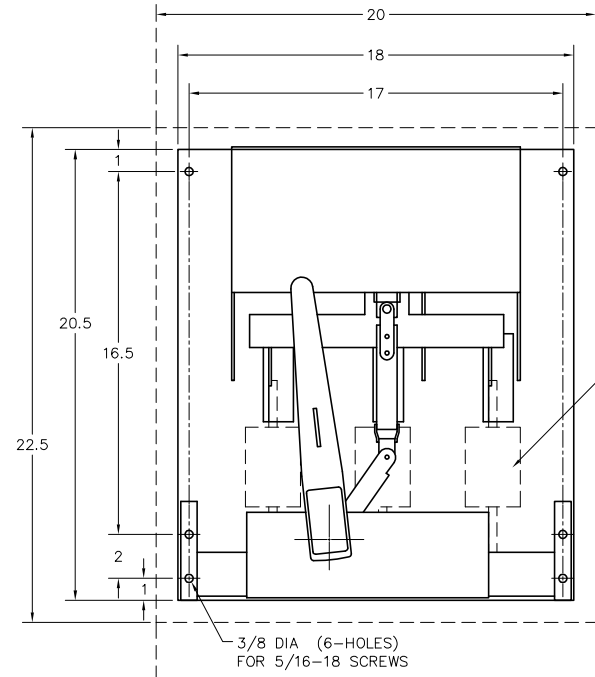


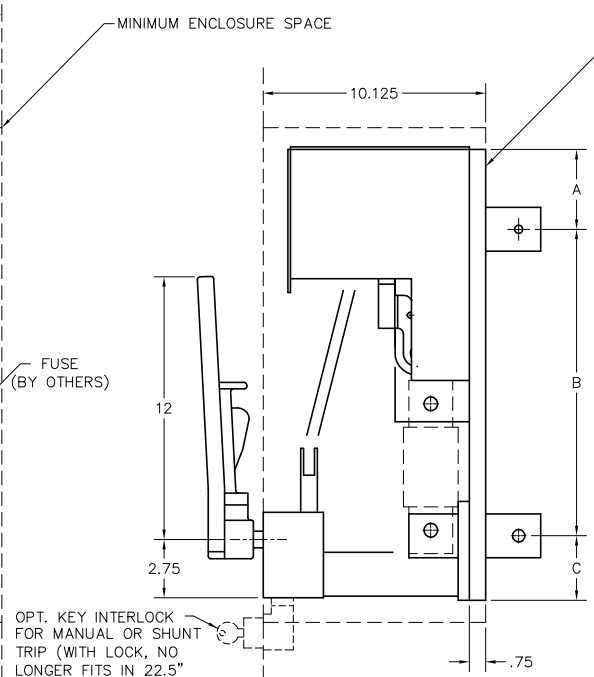
PLAN VIEW



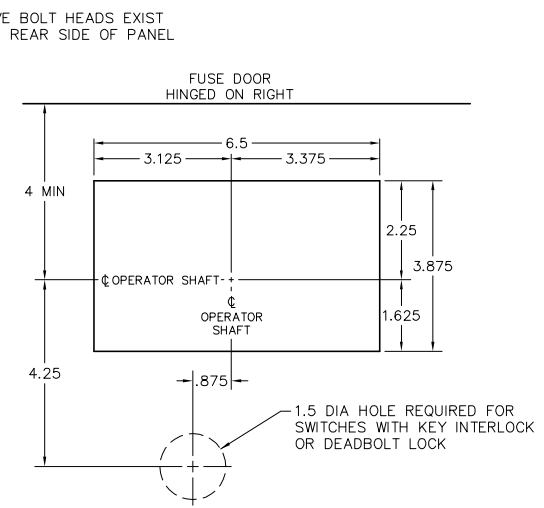
TERMINAL DRILLING



FRONT VIEW



SIDE VIEW



RECOMMENDED FRONT CUT-OUT

THIS RECTANGULAR CUT-OUT IS REQUIRED WHEN USING OPTIONAL E.U.S.E.R.C. PADLOCK CLIP

KEY INTERLOCK SPECIFICATIONS:
 KEY INTERLOCK SPECIFICATIONS FOR SWITCHES EQUIPPED WITH KEY INTERLOCK PROVISIONS ARE:
 .375 BOLT PROJECTION WHEN WITHDRAWN
 - KIRK TYPE B
 - SUPERIOR TYPE B6003

AMPS	CAT. NO. 3-POLE	CAT. NO. 2-POLE	A	B	C	D	NET WEIGHT	FUSE
400	J365-X3	J265-X3	3.5	13.188	3.813	.25	54 LBS.	CLASS J
600	J366-X3	J266-X3	3.625	13.938	2.938	.25	60 LBS.	CLASS J
800	L367-X3	L267-X3	3.75	14.125	2.625	.313	64 LBS.	CLASS L

NOTE:
 BOND IS PROVIDED BY MEANS OF MOUNTING BOLTS. OPERATOR SUPPORTS ARE METALLIC.

ADD SUFFIX "ST" TO CAT. NO. FOR SHUNT TRIP OPERATOR.
 2-POLE IS SAME AS 3-POLE EXCEPT OMIT CENTER POLE.

REV 7 6-1-00 JAE KEY INTERLOCK REVISED DUE TO NEW ST-8
 REV 6 6-25-97 RME REDRAWN ON CAD, NEW FRONT CUT-OUT
 REV 5 8-20-82 JAE KEY INT. NOTE ADDED
 REV 4 4-29-80 JAE 2-POLE ADDED

400-800A 3-P-3-W 600 VOLT A.C. BACK CONNECTED FUSIBLE SWITCHES		
SCALE:	APPROVED BY:	DRAWN BY JAE
DATE: 10-25-72		REVISED 7
boltswitch, inc. CRYSTAL LAKE, ILLINOIS 60014		DRAWING NUMBER O-1010