

KEY INTERLOCK

KEY INTERLOCK SPECIFICATIONS FOR SWITCHES EQUIPPED WITH KEY INTERLOCK PROVISIONS ARE:

- .375 BOLT PROJECTION WHEN WITHDRAWN
- KIRK TYPE B
- SUPERIOR TYPE B6003

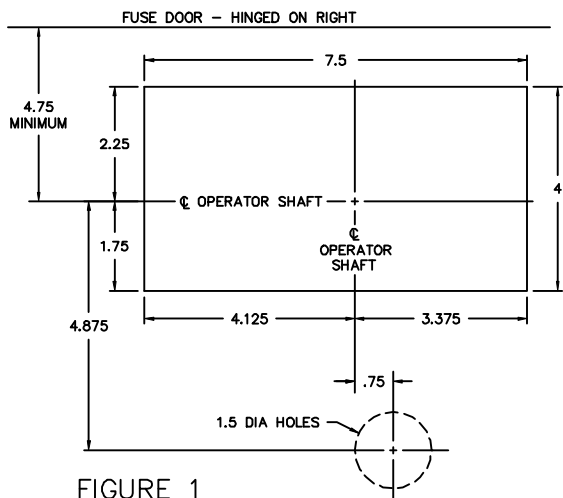


FIGURE 1
RECOMMENDED FRONT CUT-OUT

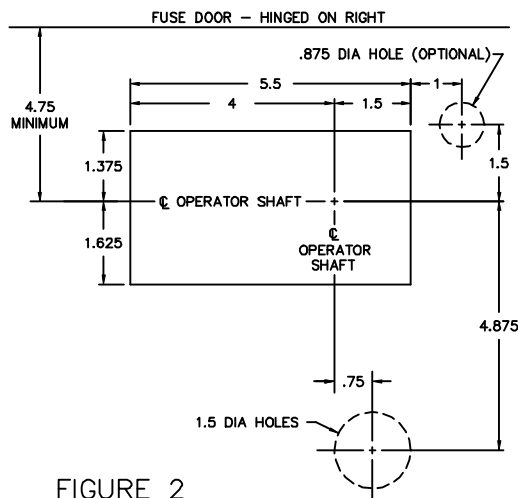


FIGURE 2
ALTERNATE FRONT CUT-OUT

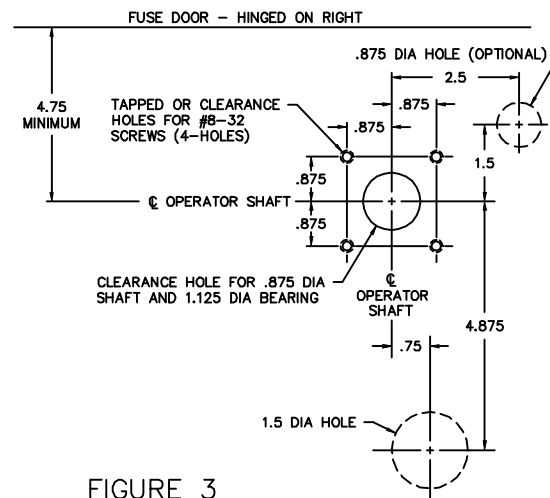


FIGURE 3
ALTERNATE FRONT CUT-OUT

NOTE: WHEN USING THE ALTERNATE POSITION INDICATOR HOLE IN FIGURE 2, USE POSITION INDICATOR LABEL #221-KP AFFIXED TO THE ENCLOSURE FRONT. WHEN USING THE POSITION INDICATOR HOLE IN FIGURE 3, USE EITHER BEZEL #221-RP OR LABEL #221-KP AFFIXED TO THE ENCLOSURE FRONT.

| | | |
|--|--------------|---------------------------|
| MANUAL OPERATOR, TYPE MO-5 (VL, SL, VLB & SLB) WITH KEY INTERLOCK | | |
| SCALE: | APPROVED BY: | DRAWN BY JAE |
| DATE: 7-7-94 | | REVISED 1 |
| boltswitch, Inc. CRYSTAL LAKE, ILLINOIS 60014 | | DRAWING NUMBER 0-1023A |