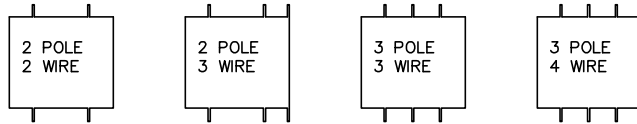
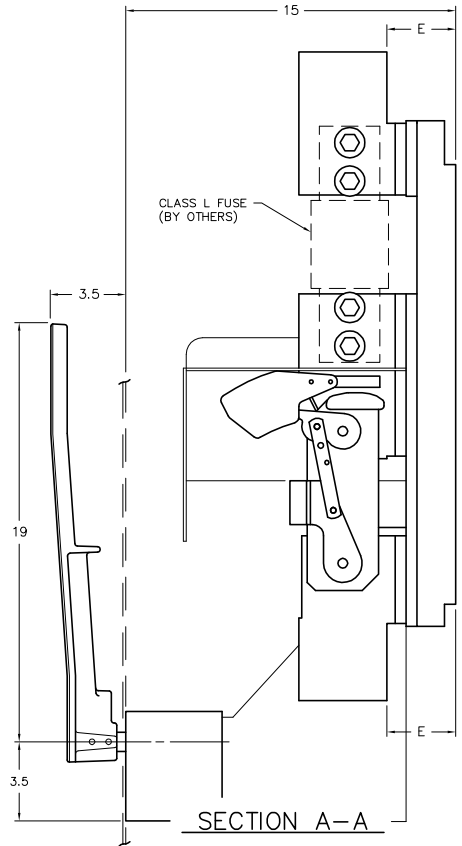


FRONT VIEW

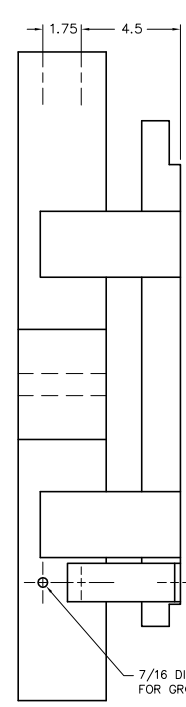
NEUTRAL



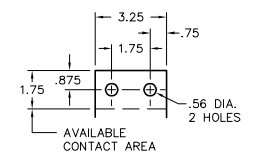
VENTILATION
 WHEN THE SWITCH IS TOTALLY ENCLOSED, VENTILATING LOUVERS MUST BE PROVIDED YIELDING A MINIMUM OPEN AREA OF "H" SQUARE INCHES NEAR THE TOP OF THE ENCLOSURE, AND "H" SQUARE INCHES NEAR THE BOTTOM OF THE ENCLOSURE.



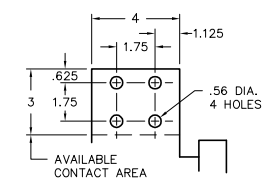
SECTION A-A



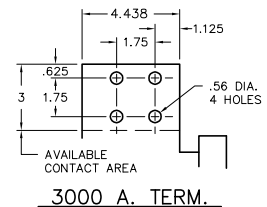
SIDE VIEW
 (ILLUSTRATES NEUTRAL ONLY)



800 A. TERMINAL



1200-2500 A. TERM.



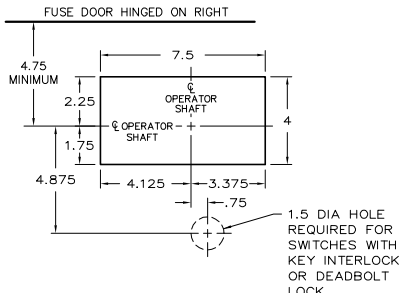
3000 A. TERM.

OPERATOR DETAILS

FOR OPERATOR DETAILS AND ALTERNATE FRONT CUT-OUTS, REFER TO THE FOLLOWING DRAWINGS:
 O-1023A MANUAL OPERATOR
 O-1090A SHUNT TRIP OPERATOR

KEY INTERLOCK

KEY INTERLOCK SPECIFICATIONS FOR SWITCHES EQUIPPED WITH KEY INTERLOCK PROVISIONS ARE:
 .375 BOLT PROJECTION WHEN WITHDRAWN
 - KIRK TYPE B
 - SUPERIOR TYPE B6003



RECOMMENDED FRONT CUT-OUT

AMP	CATALOG NUMBER				NET WT. (3-P, 3-W)	A	B	C	D	E	F	H
	2-P, 2-W	2-P, 3-W	3-P, 3-W	3-P, 4-W								
800	VLB247	VLB347-N	VLB347	VLB447-N	120	27	1.625	2.375	.375	3	.25	NONE
1200	VLB248	VLB348-N	VLB348	VLB448-N	130	29.5	3.125	3.375	.375	3	.31	NONE
1600	VLB249	VLB349-N	VLB349	VLB449-N	130	29.5	3.125	3.375	.375	3	.375	60 SQ. IN.
2000	VLB2410	VLB3410-N	VLB3410	VLB4410-N	150	29.5	3.125	3.375	.5	3.125	.5	60 SQ. IN.
2500	VLB2411	VLB3411-N	VLB3411	VLB4411-N	165	29.5	3.125	3.375	.625	3.125	.625	80 SQ. IN.
3000	VLB2412	VLB3412-N	VLB3412	VLB4412-N	177	29.5	3.125	3.375	.75	3.125	.75	120 SQ. IN.

NOTES:
 FOR SWITCHES EQUIPPED WITH OPTIONAL SHUNT TRIP, ADD SUFFIX -ST TO CATALOG NUMBER.
 800-2000A SWITCHES MAY BE RATED 600VAC. THE VOLTAGE DIGIT IN THE CAT. NO. CHANGES FROM "4" TO "6" (i.e. VLB349 BECOMES VLB369).

SERIES VLB SWITCHES (BOTTOM-FEED)
800-3000A, 2P/2W, 2P/3W, 3P/3W, 3P/4W, 480VAC

SCALE: _____ APPROVED BY: _____ DRAWN BY: WCE
 DATE: 10-14-91 _____ REVISED: 10

boltswitch, inc.
 CRYSTAL LAKE, ILLINOIS 60014

DRAWING NUMBER
O-1103

REV. 10 7-30-99 JAE ADDED NOTE REGARDING 600VAC RATING ON 800-2000A
 REV. 9 11-7-95 JAE FRONT CUT-OUT REVISED, HANDLE REVISED
 REV. 8 1-2-95 WCE "B" & PANEL SIZE DIM. CORRECTED FOR MOLDED BASE
 REV. 7 1-5-93 WCE DIM. ADDED & CORRECTED FOR OPER. SHAFT