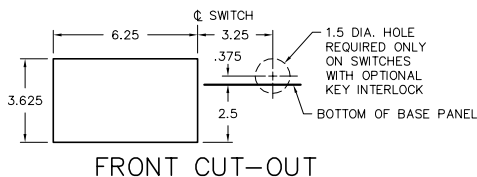


LEGEND
 ST SHUNT TRIP COIL
 M MOTOR MECHANISM
 42 MOTOR STARTER
 42x RATCHET SOLENOID
 33 MOTOR CUTOFF SWITCH
 L AUXILIARY SWITCH
 DASHED LINE INDICATE OPTIONAL WIRING BY CUSTOMER
 WIRING DIAGRAM DRAWN WITH SWITCH IN OPEN POSITION AND WITH DOOR OPEN



VENTILATION
 WHEN THE SWITCH IS TOTALLY ENCLOSED, VENTILATING LOUVERS MUST BE PROVIDED YIELDING A MINIMUM OPEN AREA OF "H" SQUARE INCHES NEAR THE TOP OF THE ENCLOSURE, AND "H" SQUARE INCHES NEAR THE BOTTOM OF THE ENCLOSURE.

AMP	CATALOG NUMBER				NET WT. (3-P, 3-W)	A	B	C	D	E	F	G		H
	2-P, 2-W	2-P, 3-W	3-P, 3-W	3-P, 4-W								GND.	INS.	
800	VL267-MST	VL367-N-MST	VL367-MST	VL467-N-MST	172 LBS	25.75	2	1.75	.375	2.5	.25	8	4	NONE
1200	VL268-MST	VL368-N-MST	VL368-MST	VL468-N-MST	179 LBS	28.5	3.25	3.25	.375	2.5	.31	10	6	NONE
1600	VL269-MST	VL369-N-MST	VL369-MST	VL469-N-MST	181 LBS	28.5	3.25	3.25	.375	2.5	.375	12	6	60 SQ. IN.
2000	VL2610-MST	VL3610-N-MST	VL3610-MST	VL4610-N-MST	198 LBS	28.5	3.25	3.25	.5	2.625	.5	14	6	60 SQ. IN.
2500	VL2611-MST	VL3611-N-MST	VL3611-MST	VL4611-N-MST	213 LBS	28.5	3.25	3.25	.625	2.625	.625	16	6	80 SQ. IN.
3000	VL2612-MST	VL3612-N-MST	VL3612-MST	VL4612-N-MST	225 LBS	28.5	3.25	3.25	.75	2.625	.75	16	8	120 SQ. IN.

SERIES VL SWITCHES, 800-3000A, 600VAC WITH MOTORIZED SHUNT TRIP OPERATOR

SCALE: _____ APPROVED BY: _____ DRAWN BY WCE
 DATE: 10-15-91 _____ REVISED

boltswitch, inc. CRYSTAL LAKE, ILLINOIS 60014 DRAWING NUMBER 0-1117