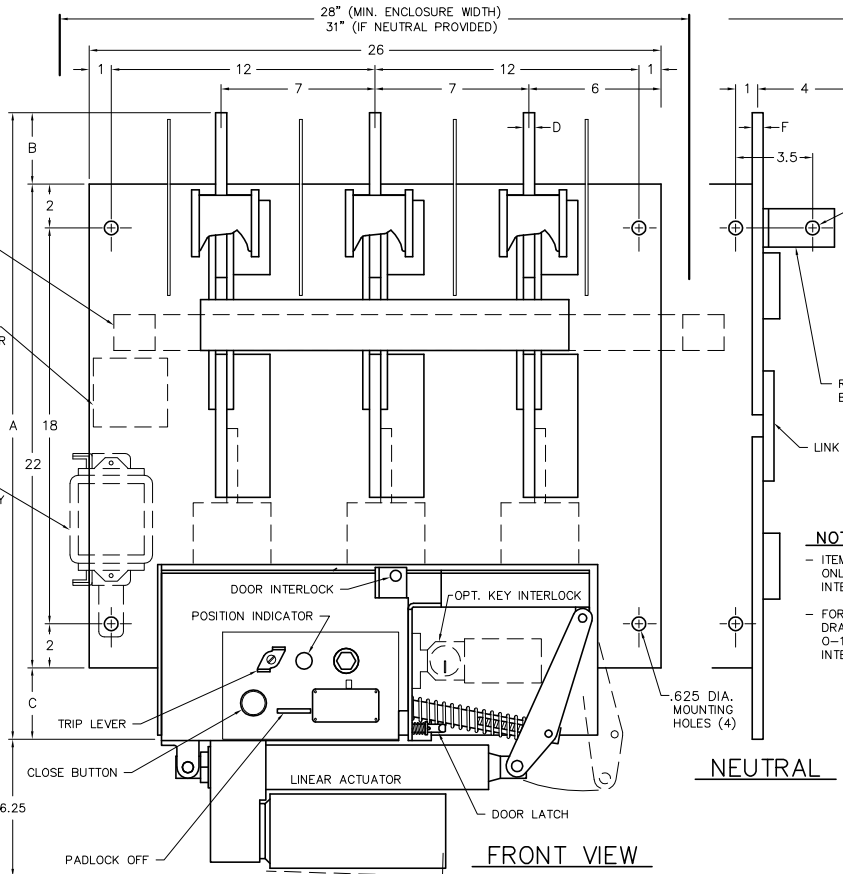


LEFT SIDE VIEW



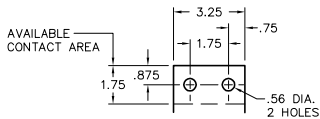
FRONT VIEW

**VENTILATION**

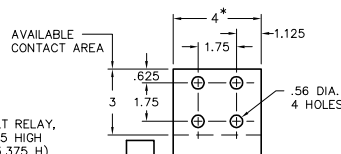
WHEN THE SWITCH IS TOTALLY ENCLOSED, VENTILATING LOUVERS MUST BE PROVIDED YIELDING A MINIMUM OPEN AREA OF "H" SQUARE INCHES NEAR THE TOP OF THE ENCLOSURE, AND "H" SQUARE INCHES NEAR THE BOTTOM OF THE ENCLOSURE.

**NOTES**

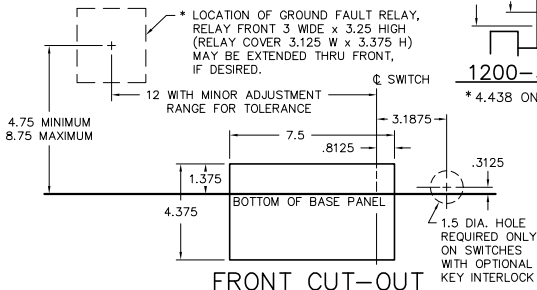
- ITEMS MARKED WITH \* ARE ONLY ON SWITCHES WITH INTEGRAL GROUND FAULT
- FOR WIRING DIAGRAMS SEE DRAWING NO. 0-1522, OR 0-1522A FOR SWITCHES WITH INTEGRAL GROUND FAULT.



800 A. TERMINAL



1200-3000 A. TERM.



FRONT CUT-OUT

VOLTAGE	AMP	CATALOG NUMBER				NET WT. (3-P, 3-W)	A	B	C	D	E	F	G		H
		2-P, 2-W	2-P, 3-W	3-P, 3-W	3-P, 4-W								GND.	INS.	
600	800	VL267-MST	VL367-N-MST	VL367-MST	VL467-N-MST	172 LBS	25.75	2	1.75	.375	2.5	.25	8	4	NONE
	1200	VL268-MST	VL368-N-MST	VL368-MST	VL468-N-MST	179 LBS	28.5	3.25	3.25	.375	2.5	.31	10	6	NONE
	1600	VL269-MST	VL369-N-MST	VL369-MST	VL469-N-MST	181 LBS	28.5	3.25	3.25	.375	2.5	.375	12	6	60
	2000	VL2610-MST	VL3610-N-MST	VL3610-MST	VL4610-N-MST	198 LBS	28.5	3.25	3.25	.5	2.625	.5	14	6	60
	2500	VL2611-MST	VL3611-N-MST	VL3611-MST	VL4611-N-MST	213 LBS	28.5	3.25	3.25	.625	2.625	.625	16	6	80
	3000	VL2612-MST	VL3612-N-MST	VL3612-MST	VL4612-N-MST	225 LBS	28.5	3.25	3.25	.75	2.625	.75	16	8	120

SWITCHES EQUIPPED WITH INTEGRAL GROUND FAULT PROTECTION EQUIPMENT	TYPICAL CAT. NO. FOR SWITCHES WITH INTEGRAL GROUND FAULT EQUIPMENT	
	1600 TYP.	600
120/240	VL369-G1-MST	
240		VL369-G2-MST
208Y/120		VL369-G3-MST
240/120		VL369-G4-MST
480	VL369-G5-MST	
480Y/277		VL369-G6-MST
600	VL369-G7-MST	
600Y/347		VL369-G8-MST
380Y/220		VL369-G9-MST

**SERIES VL SWITCHES, 800-3000A, 600VAC WITH MOTORIZED SHUNT TRIP OPERATOR**

SCALE: 8-28-92      APPROVED BY:      DRAWN BY: WCE  
 DATE: 8-28-92      REVISED: 5

**boltswitch, inc.**      CRYSTAL LAKE, ILLINOIS 60014      DRAWING NUMBER: O-1117B

REV. 5 12-12-97 WCE - WIRING DIAGRAM NOTE UPDATED