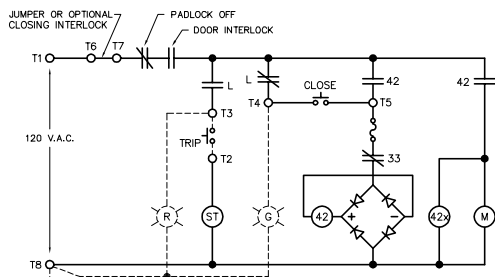
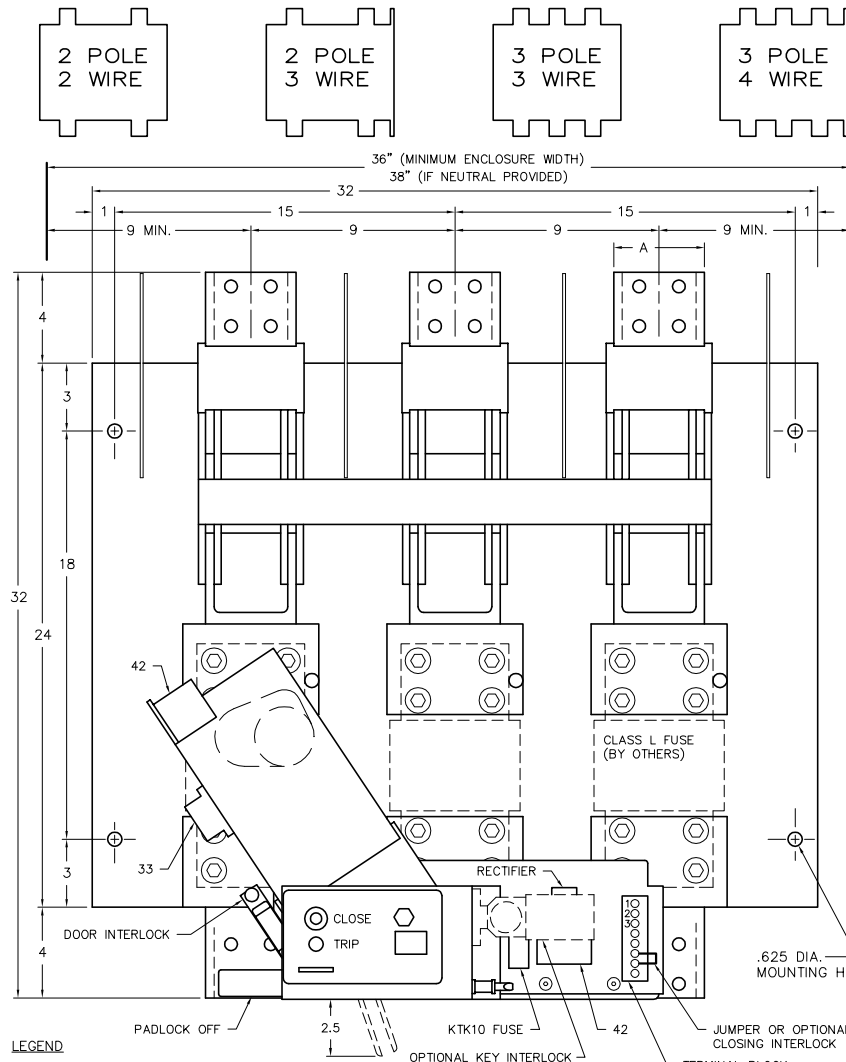


LEFT SIDE VIEW



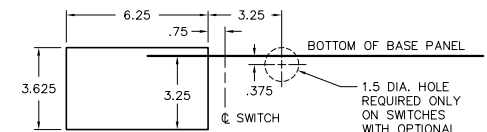
WIRING DIAGRAM



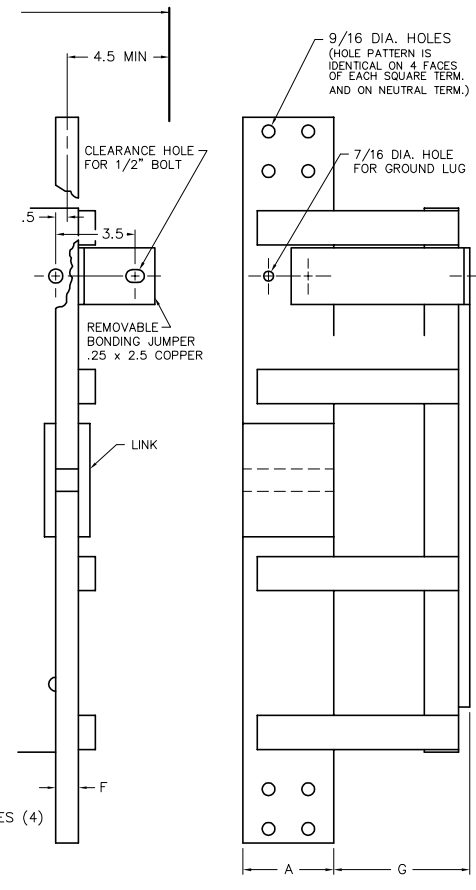
FRONT VIEW

LEGEND

- ST SHUNT TRIP COIL
 - M MOTOR MECHANISM
 - 42 MOTOR STARTER
 - 42x RATCHET SOLENOID
 - 33 MOTOR CUTOFF SWITCH
 - L AUXILIARY SWITCH
- DASHED LINE INDICATE OPTIONAL WIRING BY CUSTOMER
 WIRING DIAGRAM DRAWN WITH SWITCH IN OPEN POSITION AND WITH DOOR OPEN



FRONT CUT-OUT



NEUTRAL

RIGHT SIDE VIEW

(ILLUSTRATES NEUTRAL ONLY)

AMP	CATALOG NUMBER				NET WT. (3-P, 3-W)	A	B	C	D		E	F	G
	2-P, 2-W	2-P, 3-W	3-P, 3-W	3-P, 4-W					GND.	INS.			
4000	SL2613-MST	SL3613-N-MST	SL3613-MST	SL4613-N-MST	319 LBS	4	1.125	20	16	8	80 SQ. IN.	1	6
5000	SL2614-MST		SL3614-MST		359 LBS	5	1.625	22	16	8	120 SQ. IN.		
6000	SL2615-MST		SL3615-MST		414 LBS	5	1.625	22	16	8	120 SQ. IN.		

VENTILATION

WHEN THE SWITCH IS TOTALLY ENCLOSED, VENTILATING LOUVRES MUST BE PROVIDED YIELDING A MINIMUM OPEN AREA OF "1" SQUARE INCHES NEAR THE TOP OF THE ENCLOSURE, AND "1" SQUARE INCHES NEAR THE BOTTOM OF THE ENCLOSURE.

SERIES SL SWITCHES, 4000-6000A, 600VAC WITH MOTORIZED SHUNT TRIP OPERATOR

SCALE: APPROVED BY: DRAWN BY: WCE
 DATE: 10-21-91 REVISED

boltswitch, inc.
 CRYSTAL LAKE, ILLINOIS 60014

DRAWING NUMBER
 O-1118