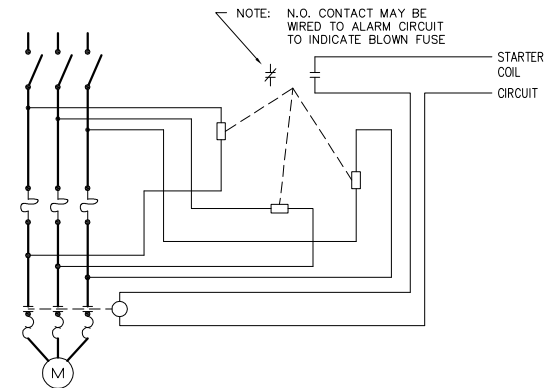
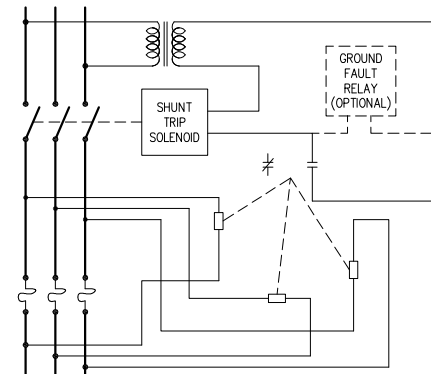


BLOWN FUSE ALARM

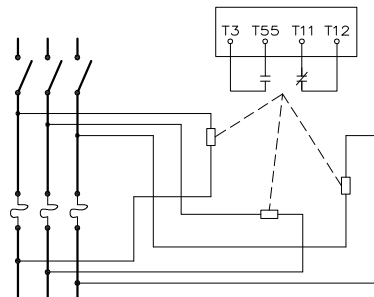


BLOWN FUSE DETECTOR WITH COMBINATION STARTER



BLOWN FUSE DETECTOR WITH SHUNT TRIP OPERATOR

NOTE:  
ALL WIRING MUST BE  
#12 AWG MINIMUM



BLOWN FUSE DETECTOR WITH MOTORIZED SHUNT TRIP OPERATOR

PW-1 "PADDLE WHEEL" BLOWN FUSE DETECTOR		
SCALE:	APPROVED BY:	DRAWN BY JAE
DATE: 6-28-76		REVISED 5
<b>boltswitch, inc.</b> CRYSTAL LAKE, ILLINOIS 60014		DRAWING NUMBER O-1127