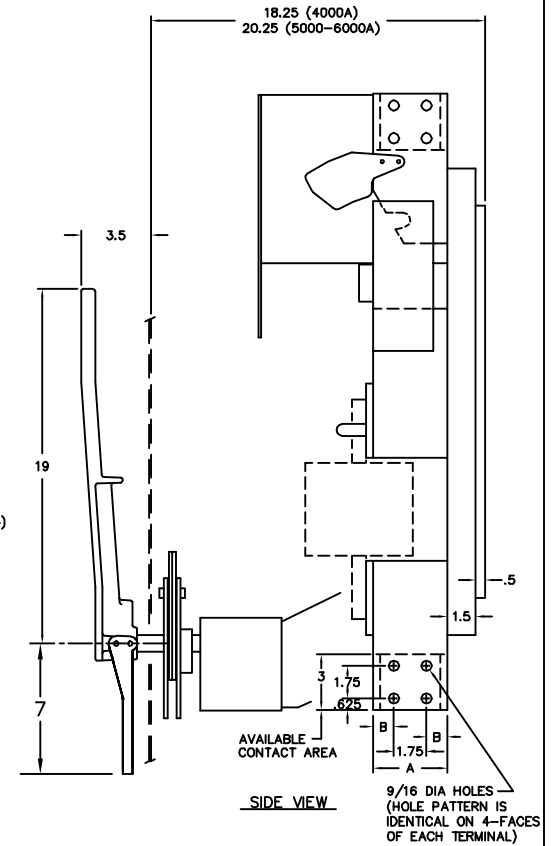
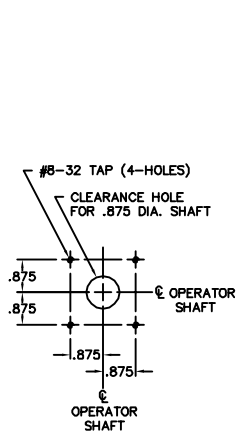


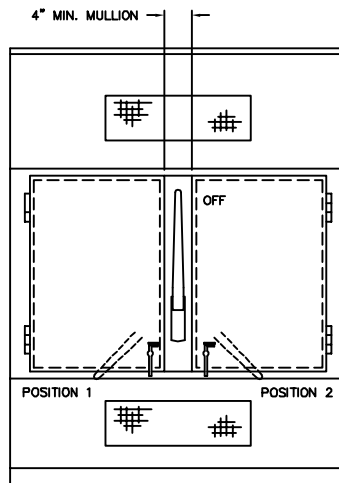
FRONT VIEW



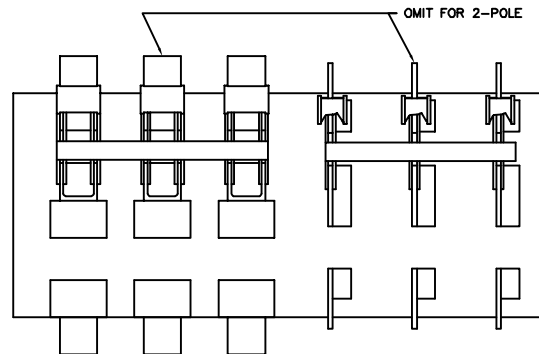
SIDE VIEW



DRILLING LAYOUT



ENCLOSURE FRONT
RECOMMENDED DESIGN



SERIES SL & VL COMBINATION
 -BASIC DIMENSIONS ARE SAME AS ABOVE
 (ALL POLE UNITS REMAIN ON 9" CENTERS)
 -DEPTH AND VENTILATION ARE DETERMINED
 BY THE LARGEST RATED SWITCH
 -FOR BASIC DIMENSIONS OF SERIES VL
 POLE UNITS, REFER TO DWG O-1022

AMPS	CATALOG NUMBER		A	B	E
	2-POLE	3-POLE			
4000	SL2613-13	SL3613-13	4	1.125	80
5000	SL2614-14	SL3614-14	5	1.625	120
6000	SL2615-15	SL3615-15	5	1.625	150

VENTILATION:
 WHEN THE SWITCHES ARE TOTALLY
 ENCLOSED, VENTILATION LOUVERS MUST
 BE PROVIDED YIELDING A MINIMUM OF
 "E" SQUARE INCHES NEAR THE TOP OF THE
 ENCLOSURE AND "E" SQUARE INCHES NEAR
 THE BOTTOM OF THE ENCLOSURE. VENT-
 ILATION SHOULD BE BASED ON AMPACITY
 OF LARGEST SWITCH

(SIDE-BY-SIDE) SERIES SL SWITCHES
 WITH GENEVA DUAL OPERATOR

SCALE:	APPROVED BY:	DRAWN BY JAE
DATE: 3-15-79		REVISED 3

boltswitch, Inc.
 CRYSTAL LAKE, ILLINOIS 60014

DRAWING NUMBER
 O-1236

REV. 3 8-9-64 HANDLE EXTENSION ADDED JAE
 REV. 2 12-28-60 REDRAWN ON CAD FILE
 REV. 1 1-24-58 "OMIT FOR 2-POLE" ADDED JAE