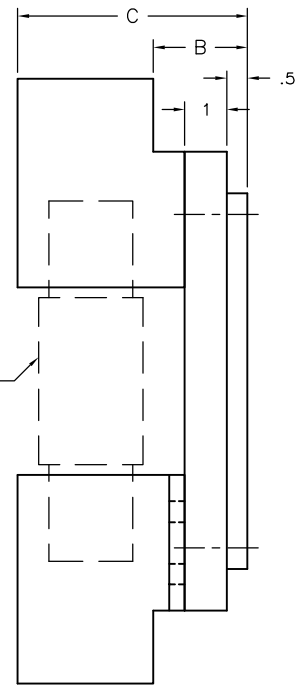
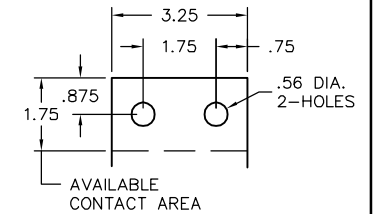


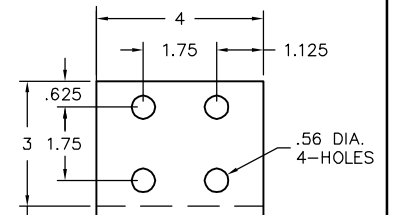
FRONT VIEW



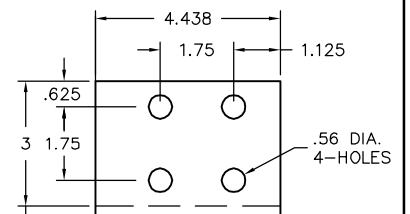
SIDE VIEW



800 A. TERMINAL



1200-2500 A. TERMINAL



3000 A. TERMINAL

AMP	A	B	C	D	E
800	.375	2.25	5.50	14.50	1.75
1200	.375	2.25	6.25	17.50	3.25
1600	.375	2.25	6.25	17.50	3.25
2000	.500	2.375	6.375	17.50	3.25
2500	.625	2.375	6.375	17.50	3.25
3000	.750	2.375	6.813	17.50	3.25

800-3000 AMP, 3-POLE, 600 VAC FUSE BLOCK, (CLASS L FUSE)		
SCALE:	APPROVED BY:	DRAWN BY JWE
DATE: 1-30-80		REVISED 2
boltswitch, inc. CRYSTAL LAKE, ILLINOIS 60014		DRAWING NUMBER O-1259

REV. 2 12-5-01 SRR REVISED & REDRAWN ON CAD,
800 AMP OPTION ADDED