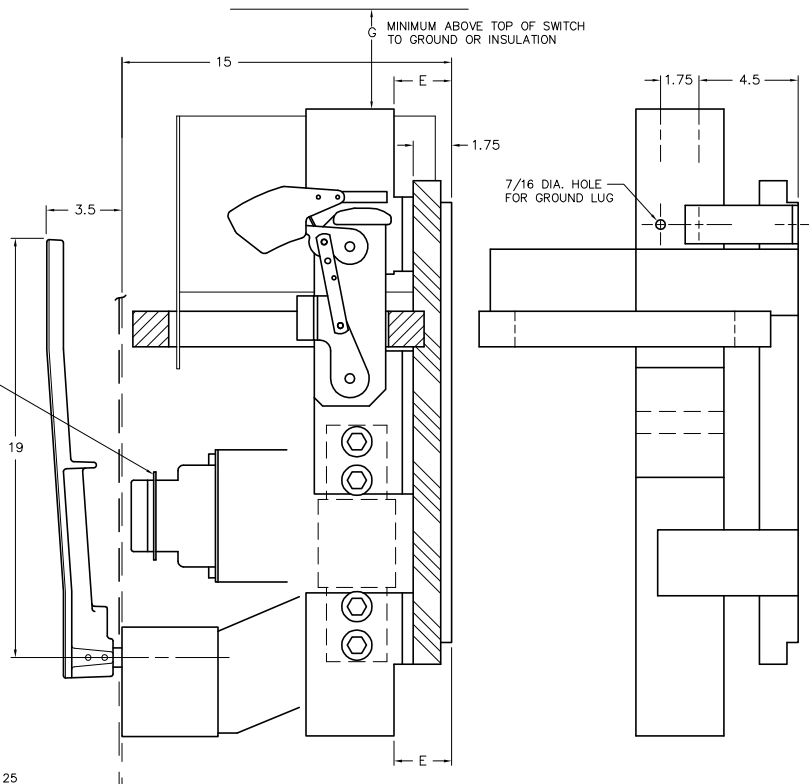
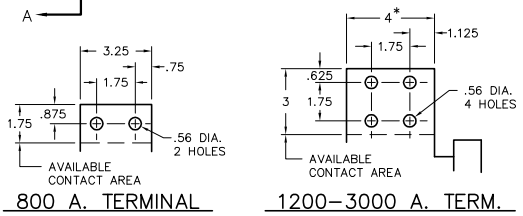


FRONT VIEW



SECTION A-A

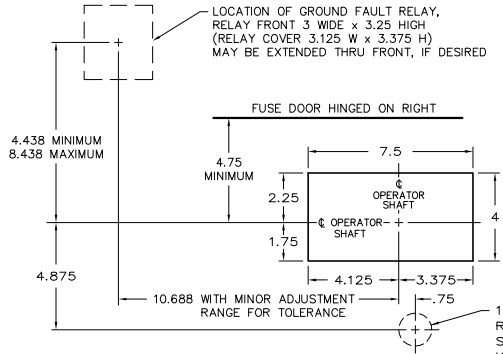
SIDE VIEW
(ILLUSTRATES NEUTRAL ONLY)



800 A. TERMINAL

1200-3000 A. TERM.

* 4.438 ON 3000 A. POLES ONLY



RECOMMENDED FRONT CUT-OUT

VENTILATION
WHEN THE SWITCH IS TOTALLY ENCLOSED, VENTILATING LOUVERS MUST BE PROVIDED YIELDING A MINIMUM OPEN AREA OF "H" SQUARE INCHES NEAR THE TOP OF THE ENCLOSURE, AND "H" SQUARE INCHES NEAR THE BOTTOM OF THE ENCLOSURE.

OPERATOR DETAILS
FOR OPERATOR DETAILS AND ALTERNATE FRONT CUT-OUTS, REFER TO DWG NO. O-1090A

KEY INTERLOCK
KEY INTERLOCK SPECIFICATIONS FOR SWITCHES EQUIPPED WITH KEY INTERLOCK PROVISIONS ARE:
.375 BOLT PROJECTION WHEN WITHDRAWN
- KIRK TYPE B
- SUPERIOR TYPE B6003

| AMP | CATALOG NUMBER† | NET WEIGHT | A | B | C | D | E | F | G | | H |
|------|-----------------|------------|-------|------|------|------|-------|------|------|------|-------------|
| | | | | | | | | | GND. | INS. | |
| 800 | VL367-G6 | 179 LBS | 25.75 | 2 | 1.75 | .375 | 2.5 | .25 | 8 | 4 | NONE |
| 1200 | VL368-G6 | 186 LBS | 28.5 | 3.25 | 3.25 | .375 | 2.5 | .31 | 10 | 6 | NONE |
| 1600 | VL369-G6 | 188 LBS | 28.5 | 3.25 | 3.25 | .375 | 2.5 | .375 | 12 | 6 | 60 SQ. IN. |
| 2000 | VL3610-G6 | 205 LBS | 28.5 | 3.25 | 3.25 | .5 | 2.625 | .5 | 14 | 6 | 60 SQ. IN. |
| 2500 | VL3611-G6 | 220 LBS | 28.5 | 3.25 | 3.25 | .625 | 2.625 | .625 | 16 | 6 | 80 SQ. IN. |
| 3000 | VL3612-G6 | 232 LBS | 28.5 | 3.25 | 3.25 | .75 | 2.625 | .75 | 16 | 8 | 120 SQ. IN. |

† CATALOG NO. AS SHOWN IS FOR 3 POLE, 4 WIRE, 277/480 VOLT SYSTEMS. SUFFIX "6" WILL CHANGE FOR OTHER SYSTEMS AS FOLLOWS:

| POLE | WIRE | VOLTAGE | SUFFIX |
|------|------|---------|--------|
| 2 | 3 | 120/240 | 1 |
| 3 | 3 | 240 | 2 |
| 3 | 4 | 120/208 | 3 |
| 3 | 4 | 120/240 | 4 |
| 3 | 3 | 480 | 5 |
| 3 | 3 | 600 | 7 |
| 3 | 4 | 347/600 | 8 |
| 3 | 4 | 220/380 | 9 |

NOTE: FOR WIRING DIAGRAM OF GROUND FAULT RELAY REFER TO DWG. NO. O-1431.

SERIES VL SWITCHES WITH INTEGRAL GROUND FAULT ELEMENT

| | | |
|----------------|--------------|--------------|
| SCALE: | APPROVED BY: | DRAWN BY WCE |
| DATE: 11-26-90 | | REVISED 7 |

boltswitch, inc.
CRYSTAL LAKE, ILLINOIS 60014

DRAWING NUMBER
O-1287