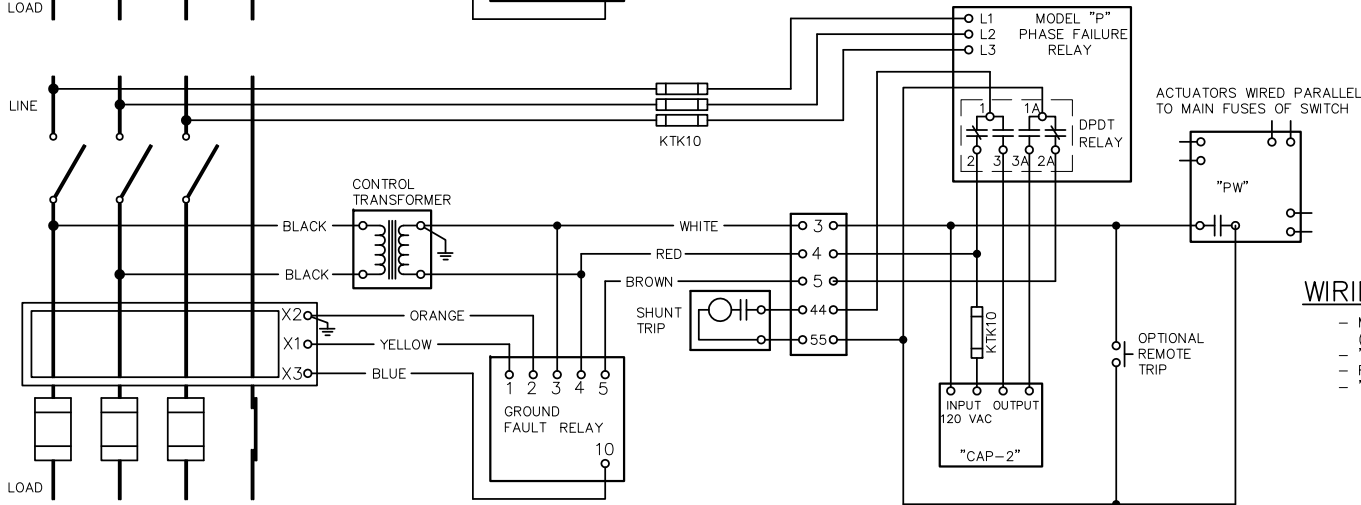


STANDARD FACTORY WIRING

- OPTIONAL ACCESSORIES SHOWN:
 - "PW" PADDLE WHEEL BLOWN FUSE DETECTOR
 - REMOTE TRIP

FOR SWITCHES EQUIPPED WITH MOTORIZED SHUNT TRIP (MST) OPERATORS AND INTEGRAL GROUND FAULT, REFER TO DWG. NO. 0-1522A

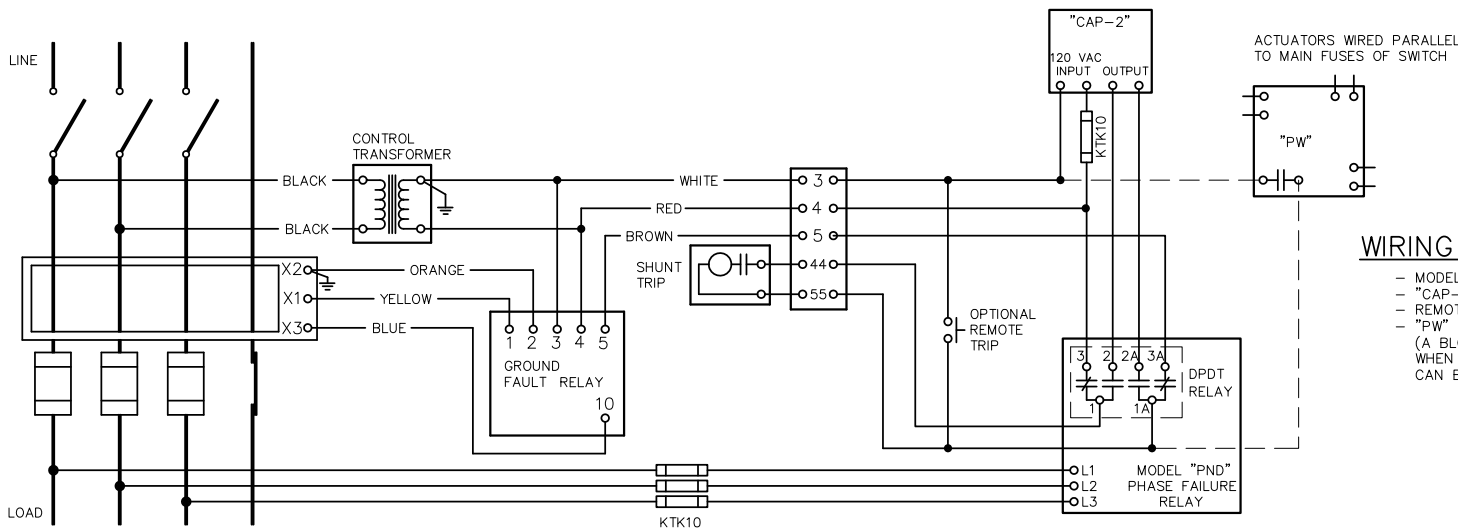


WIRING FOR FOLLOWING ACCESSORIES:

- MODEL "P" PHASE FAILURE RELAY (MUST BE WIRED TO THE LINE SIDE OF SWITCH AS SHOWN)
- "CAP-2" CAPACITOR UNIT
- REMOTE TRIP
- "PW" PADDLE WHEEL BLOWN FUSE DETECTOR

NOTE:

CONTACT POSITIONS ON PHASE FAILURE RELAYS ARE SHOWN WHEN SYSTEMS ARE ENERGIZED AND NORMAL



WIRING FOR FOLLOWING ACCESSORIES

- MODEL "PND" PHASE FAILURE RELAY
- "CAP-2" CAPACITOR UNIT
- REMOTE TRIP
- "PW" PADDLE WHEEL BLOWN FUSE DETECTOR (A BLOWN FUSE DETECTOR IS SELDOM REQUIRED WHEN USING THE "PND" RELAY, SINCE THE "PND" CAN BE WIRED TO THE LOAD SIDE OF THE FUSES.)

WIRING DIAGRAMS FOR SWITCHES WITH INTEGRAL GROUND FAULT & ACCESSORIES

SCALE:	APPROVED BY:	DRAWN BY WCE
DATE: 10-9-91		REVISED 9

REV. 9 12-13-16 ETM WIRING REVISED (RESISTOR REMOVED)
 REV. 8 5-16-02 JAE WIRING REVISED (INTERPOSING RELAY REMOVED)
 REV. 7 12-12-97 WCE NOTES ADDED
 REV. 6 11-24-92 WCE "MST" REFERENCE ADDED

boltswitch, inc.
 CRYSTAL LAKE, ILLINOIS 60014

DRAWING NUMBER
 0-1431