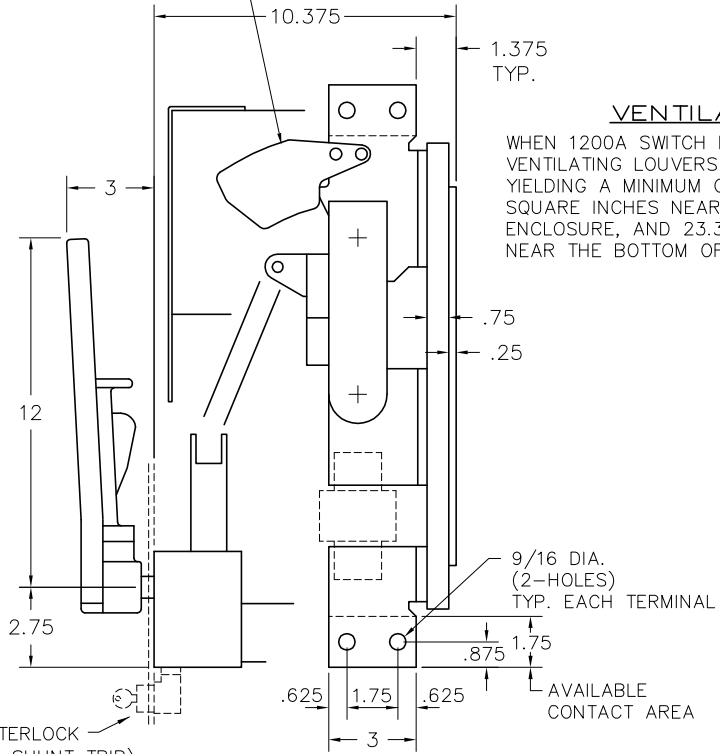


FRONT VIEW

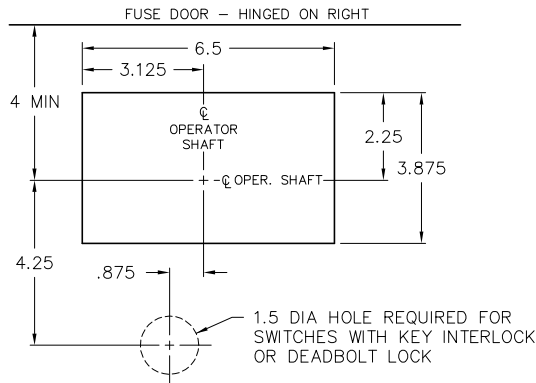
ARC CHUTES & BARRIERS ARE OMITTED ON 240 VOLT SWITCHES ONLY



SIDE VIEW

VENTILATION

WHEN 1200A SWITCH IS TOTALLY ENCLOSED, VENTILATING LOUVERS MUST BE PROVIDED YIELDING A MINIMUM OPEN AREA OF 23.3 SQUARE INCHES NEAR THE TOP OF THE ENCLOSURE, AND 23.3 SQUARE INCHES NEAR THE BOTTOM OF THE ENCLOSURE.



RECOMMENDED FRONT CUT-OUT

THIS RECTANGULAR CUT-OUT IS REQUIRED WHEN USING OPTIONAL E.U.S.E.R.C. PADLOCK CLIP

KEY INTERLOCK SPECIFICATIONS

KEY INTERLOCK SPECIFICATIONS FOR SWITCHES EQUIPPED WITH KEY INTERLOCK PROVISIONS ARE:
.375 BOLT PROJECTION WHEN WITHDRAWN
- KIRK TYPE B
- SUPERIOR TYPE B6003

OPT. KEY INTERLOCK (MANUAL OR SHUNT TRIP)

VOLTS	AMPS	CAT. NO. 3 POLE	CAT. NO. 2 POLE	NET WT. 3 POLE	B
240 (USE 300 V. FUSES)	800	VT327	VT227	58 LBS.	.312
	1200	VT328	VT228	61 LBS.	.375
480Y/277 (USE 300 V. FUSES)	800	VT337	VT237	62 LBS.	.312
	1200	VT338	VT238	65 LBS.	.375
600 (USE 600 V. FUSES)	800	VT367	VT267	62 LBS.	.312
	1200	VT368	VT268	65 LBS.	.375

ADD SUFFIX "-ST" TO CAT. NO. FOR SHUNT TRIP OPERATOR.
2-POLE IS SAME AS 3-POLE EXCEPT OMIT CENTER POLE.

SERIES VT SWITCHES
800 & 1200 AMP 2 & 3 POLE

SCALE:	APPROVED BY:	DRAWN BY J.A.E.
DATE: 6-12-92		REVISED 4

boltswitch, inc.
CRYSTAL LAKE, ILLINOIS 60014

DRAWING NUMBER
0-1520

REV 4 2-23-06 JWE UPDATED TO SHOW CURRENT HANDLE
REV 3 6-1-00 RME KEY INT REVISED DUE TO NEW ST-8
REV 2 7-8-97 RME NEW FRONT CUT-OUT
REV 1 10-20-92 JAE 480Y/277 VOLT REINSTATED