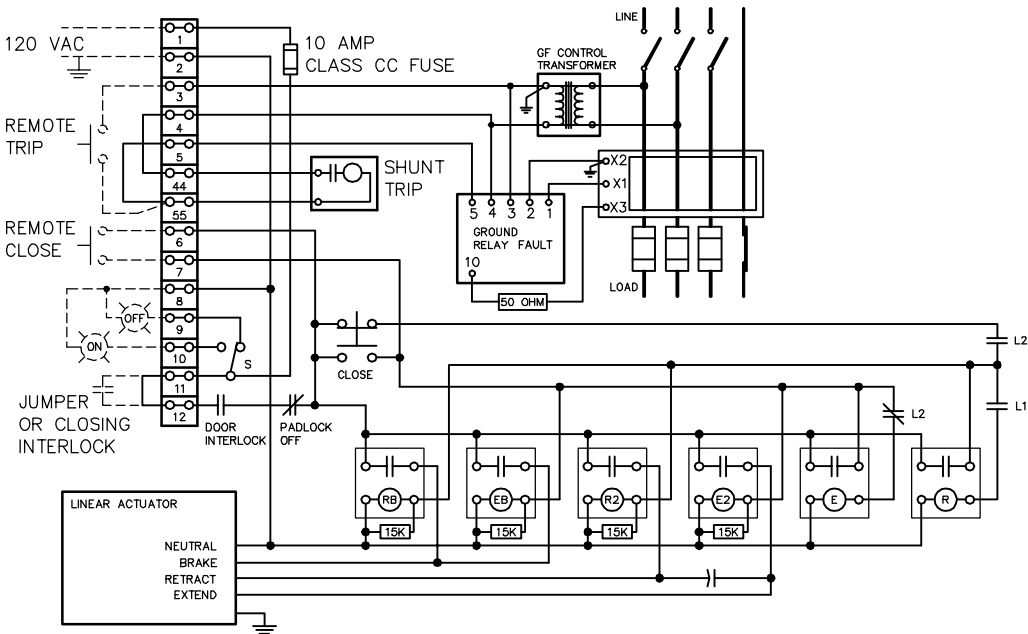


NOTES

- DOTTED LINES INDICATE FIELD WIRING OPTIONS.
- REQUIRED CONTROL TRANSFORMER FOR SWITCH OPERATION IS 250VA MINIMUM.
- TERMINAL TIGHTENING TORQUE IS 0.5 N-m
- R.C. MOMENTARY CONTACT 1/2 SEC. MAX.

WIRING WITHOUT INTEGRAL GROUND FAULT

- FOR FIELD WIRING ACCESSORIES REFER TO DRAWING O-1522



WIRING WITH INTEGRAL GROUND FAULT

- FOR FIELD WIRING ACCESSORIES REFER TO DRAWING O-1522A

WIRING DIAGRAMS FOR SWITCHES WITH MOTORIZED SHUNT TRIP OPERATORS		
SCALE:	APPROVED BY:	DRAWN BY WCE
DATE: 3-11-93		REVISED 2
boltswitch, inc. CRYSTAL LAKE, ILLINOIS 60014		DRAWING NUMBER O-1530