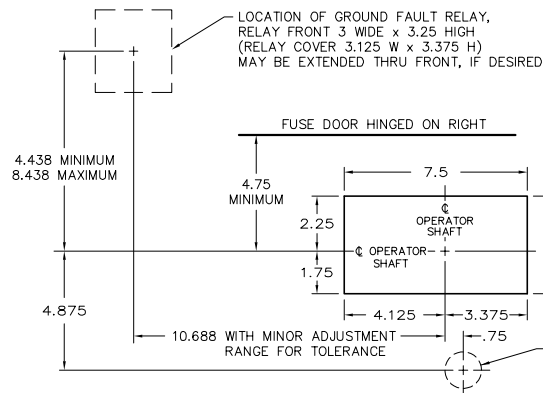
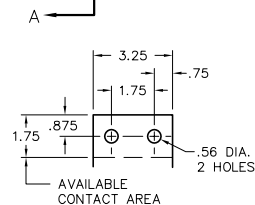


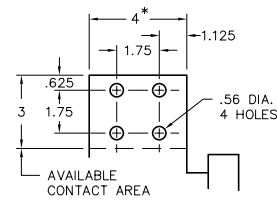
FRONT VIEW



RECOMMENDED FRONT CUT-OUT



800 A. TERMINAL



1200-3000 A. TERM.

*4.438 ON 3000 A. POLES ONLY

VENTILATION

WHEN THE SWITCH IS TOTALLY ENCLOSED, VENTILATING LOUVERS MUST BE PROVIDED YIELDING A MINIMUM OPEN AREA OF "H" SQUARE INCHES NEAR THE TOP OF THE ENCLOSURE, AND "H" SQUARE INCHES NEAR THE BOTTOM OF THE ENCLOSURE.

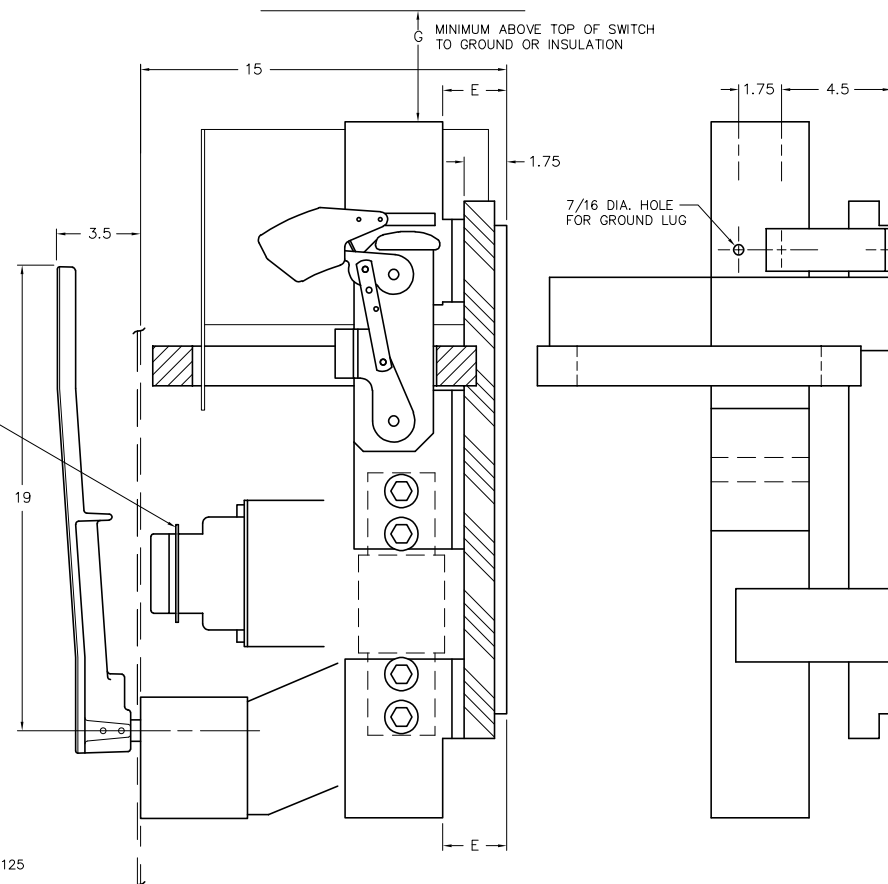
OPERATOR DETAILS

FOR OPERATOR DETAILS AND ALTERNATE FRONT CUT-OUTS, REFER TO DWG NO. 0-1090A

KEY INTERLOCK

KEY INTERLOCK SPECIFICATIONS FOR SWITCHES EQUIPPED WITH KEY INTERLOCK PROVISIONS ARE:

- .375 BOLT PROJECTION WHEN WITHDRAWN
- KIRK TYPE B
- SUPERIOR TYPE B6003



SECTION A-A

SIDE VIEW
(ILLUSTRATES NEUTRAL ONLY)

AMP	CATALOG [†] NUMBER	NET WEIGHT	A	B	C	D	E	F	G GND. INS.	H
800	VL367XXX	179 LBS	25.75	2	1.75	.375	2.5	.25	8	NONE
1200	VL368XXX	186 LBS	28.5	3.25	3.25	.375	2.5	.31	10	NONE
1600	VL369XXX	188 LBS	28.5	3.25	3.25	.375	2.5	.375	12	60 SQ. IN.
2000	VL3610XXX	205 LBS	28.5	3.25	3.25	.5	2.625	.5	14	60 SQ. IN.
2500	VL3611XXX	220 LBS	28.5	3.25	3.25	.625	2.625	.625	16	80 SQ. IN.
3000	VL3612XXX	232 LBS	28.5	3.25	3.25	.75	2.625	.75	16	120 SQ. IN.

SERIES VL SWITCHES WITH INTEGRAL GROUND FAULT AND ARC FLASH			
SCALE:	APPROVED BY:		DRAWN BY AC
DATE: 4/25/25			REVISED
<i>boltswitch, inc.</i> CRYSTAL LAKE, ILLINOIS 60014			DRAWING NUMBER O-1287A