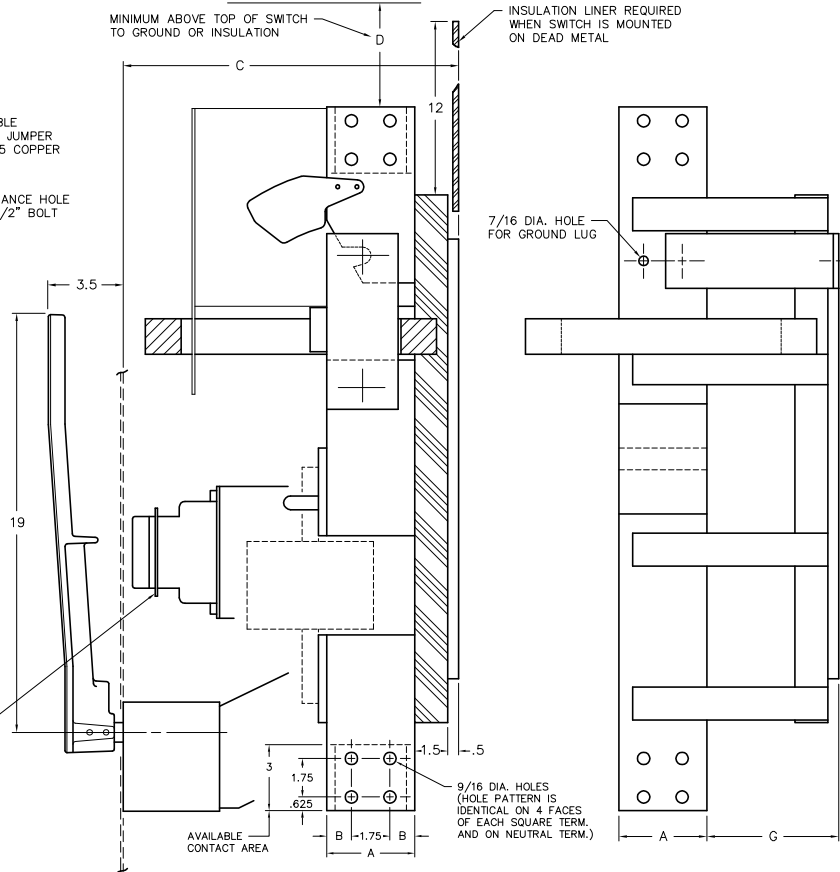
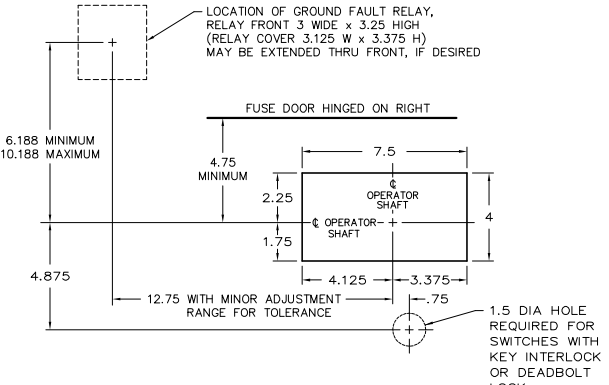


FRONT VIEW



SECTION A-A

SIDE VIEW
(ILLUSTRATES NEUTRAL ONLY)



RECOMMENDED FRONT CUT-OUT

VENTILATION

WHEN THE SWITCH IS TOTALLY ENCLOSED, VENTILATING LOUVERS MUST BE PROVIDED YIELDING A MINIMUM OPEN AREA OF "E" SQUARE INCHES NEAR THE TOP OF THE ENCLOSURE, AND "E" SQUARE INCHES NEAR THE BOTTOM OF THE ENCLOSURE.

OPERATOR DETAILS

FOR OPERATOR DETAILS AND ALTERNATE FRONT CUT-OUTS, REFER TO DWG NO. 0-1090A

KEY INTERLOCK

KEY INTERLOCK SPECIFICATIONS FOR SWITCHES EQUIPPED WITH KEY INTERLOCK PROVISIONS ARE:

- .375 BOLT PROJECTION WHEN WITHDRAWN
- KIRK TYPE B
- SUPERIOR TYPE B6003

AMP	CATALOG NUMBER	NET WEIGHT	A	B	C	D	E	F	G
4000	SL3613-G6	380 LBS	4	1.125	15.25	16	8	80 SQ. IN.	1 6

† CATALOG NO. AS SHOWN IS FOR 3 POLE, 4 WIRE, 277/480 VOLT SYSTEMS. SUFFIX "6" WILL CHANGE FOR OTHER SYSTEMS AS FOLLOWS:

POLE	WIRE	VOLTAGE	SUFFIX
2	3	120/240	1
3	3	240	2
3	4	120/208	3
3	4	120/240	4
3	3	480	5
3	3	600	7
3	4	347/600	8
3	4	220/380	9

NOTE: FOR WIRING DIAGRAM OF GROUND FAULT RELAY REFER TO DWG. NO. 0-1431.

SERIES SL SWITCHES WITH INTEGRAL GROUND FAULT ELEMENT

SCALE:	APPROVED BY:	DRAWN BY WCE
DATE: 4-30-90		REVISED 6

boltswitch, inc.
CRYSTAL LAKE, ILLINOIS 60014

DRAWING NUMBER
0-1328

REV. 6 11-7-91 JAE NEW FRONT CUT-OUT, HANDLE STYLE & LOCATION REVISED
 REV. 5 11-21-91 WCE CUT-OUT DIM. CORRECTED
 REV. 4 10-7-91 WCE DRAWING REFS. CHANGED
 REV. 3 4-30-90 WCE REDRAWN WITH BOLSWITCH G.F. COMPONENTS