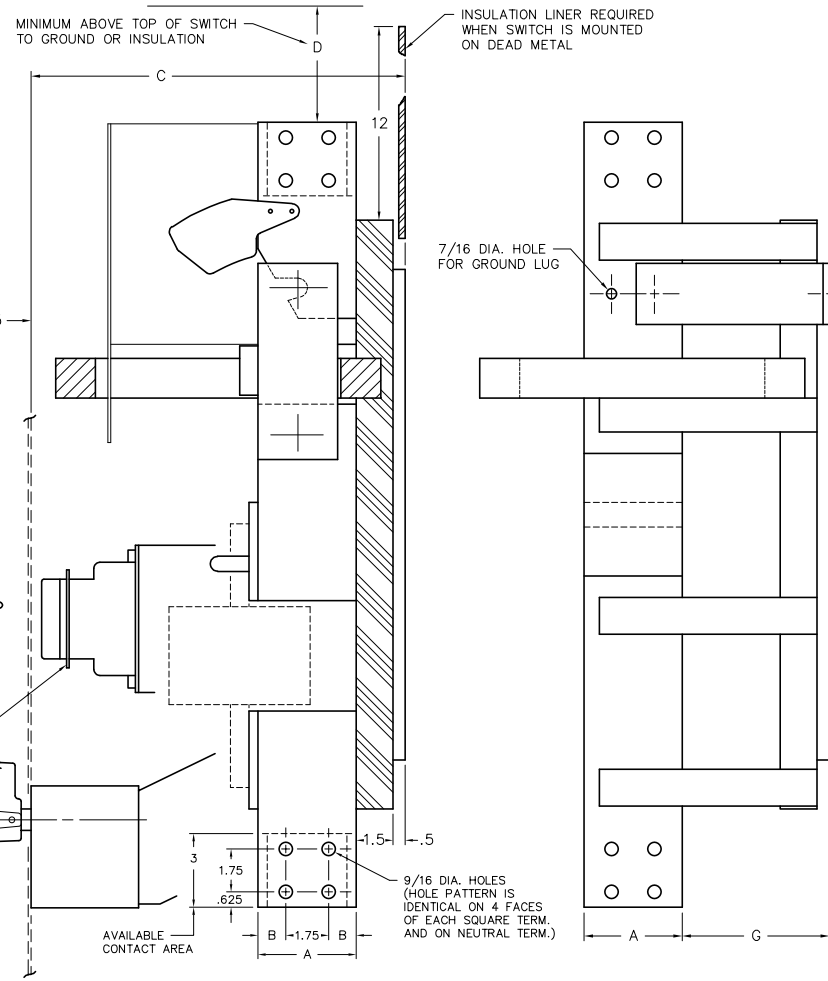
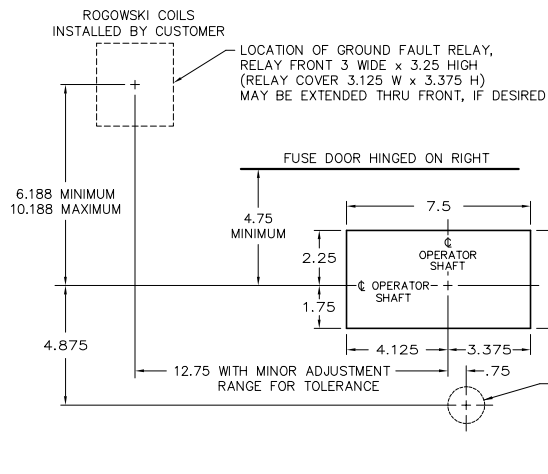


FRONT VIEW



SECTION A-A

SIDE VIEW
(ILLUSTRATES NEUTRAL ONLY)



RECOMMENDED FRONT CUT-OUT

VENTILATION

WHEN THE SWITCH IS TOTALLY ENCLOSED, VENTILATING LOUVERS MUST BE PROVIDED YIELDING A MINIMUM OPEN AREA OF "E" SQUARE INCHES NEAR THE TOP OF THE ENCLOSURE, AND "E" SQUARE INCHES NEAR THE BOTTOM OF THE ENCLOSURE.

OPERATOR DETAILS

FOR OPERATOR DETAILS AND ALTERNATE FRONT CUT-OUTS, REFER TO DWG NO. O-1090A

KEY INTERLOCK

KEY INTERLOCK SPECIFICATIONS FOR SWITCHES EQUIPPED WITH KEY INTERLOCK PROVISIONS ARE:

- .375 BOLT PROJECTION WHEN WITHDRAWN
- KIRK TYPE B
- SUPERIOR TYPE B6003

AMP	CATALOG NUMBER	NET WEIGHT	A	B	C	D		E	F	G
						GND.	INS.			
4000	SL3613XXX	380 LBS	4	1.125	15.25	16	8	80 SQ. IN.	1	6

SERIES SL SWITCHES WITH INTEGRAL GROUND FAULT AND ARC FLASH		
SCALE:	APPROVED BY:	DRAWN BY A C
DATE: 04/25/25		REVISED
<i>boltswitch, inc.</i> CRYSTAL LAKE, ILLINOIS 60014		DRAWING NUMBER O-1328A