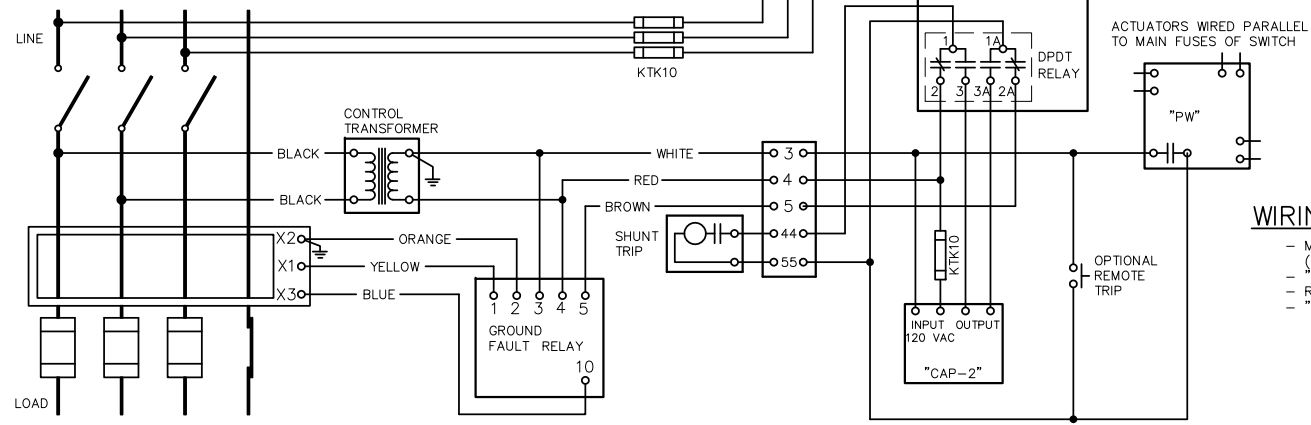
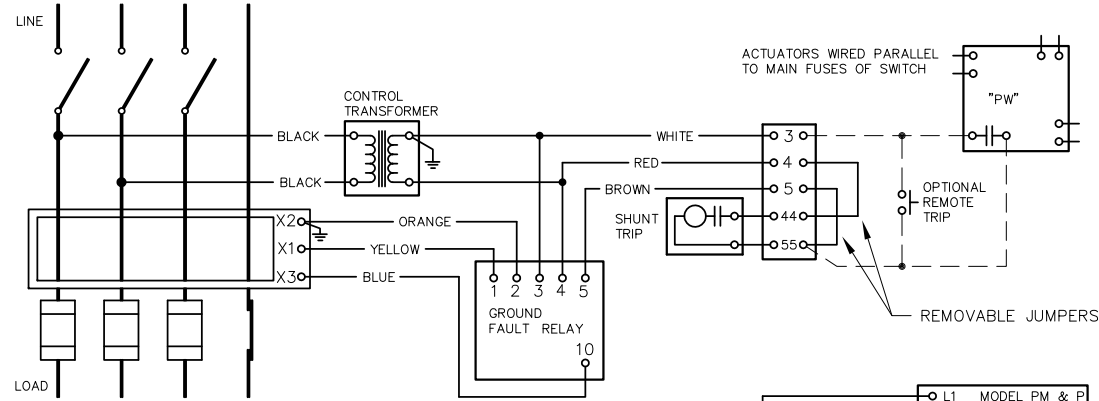


STANDARD FACTORY WIRING

OPTIONAL ACCESSORIES SHOWN:
 - "PW" PADDLE WHEEL BLOWN FUSE DETECTOR
 - REMOTE TRIP

FOR SWITCHES EQUIPPED WITH MOTORIZED SHUNT TRIP (MST) OPERATORS AND INTEGRAL GROUND FAULT, REFER TO DWG. NO. O-1522A

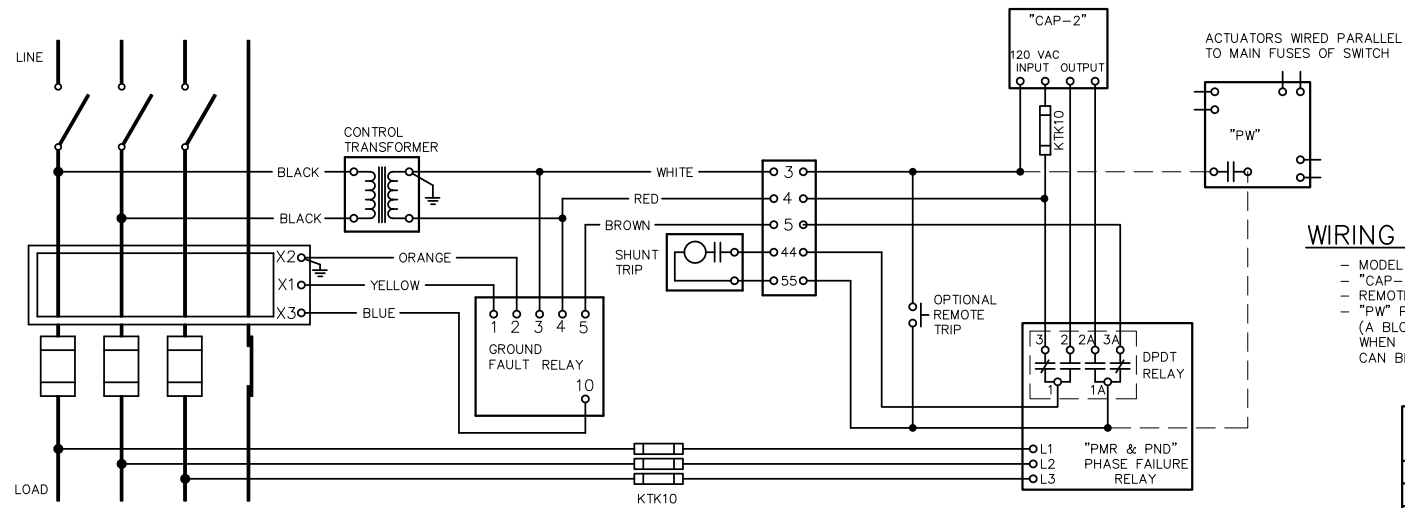


WIRING FOR FOLLOWING ACCESSORIES:

- MODEL "PM & P" PHASE FAILURE RELAY (MUST BE WIRED TO THE LINE SIDE OF SWITCH AS SHOWN)
- "CAP-2" CAPACITOR UNIT
- REMOTE TRIP
- "PW" PADDLE WHEEL BLOWN FUSE DETECTOR

NOTE:

CONTACT POSITIONS ON PHASE FAILURE RELAYS ARE SHOWN WHEN SYSTEMS ARE ENERGIZED AND NORMAL



WIRING FOR FOLLOWING ACCESSORIES

- MODEL "PMR & PND" PHASE FAILURE RELAY
- "CAP-2" CAPACITOR UNIT
- REMOTE TRIP
- "PW" PADDLE WHEEL BLOWN FUSE DETECTOR (A BLOWN FUSE DETECTOR IS SELDOM REQUIRED WHEN USING THE "PMR & PND" RELAY, SINCE THESE CAN BE WIRED TO THE LOAD SIDE OF THE FUSES.)

REV. 10 11-20-19 ETM PMR INFORMATION ADDED
 REV. 9 12-13-16 ETM WIRING REVISED (RESISTOR REMOVED)
 REV. 8 5-16-02 JAE WIRING REVISED (INTERPOSING RELAY REMOVED)
 REV. 7 12-12-97 WCE NOTES ADDED
 REV. 6 11-24-92 WCE "MST" REFERENCE ADDED

WIRING DIAGRAMS FOR SWITCHES WITH INTEGRAL GROUND FAULT & ACCESSORIES		
SCALE:	APPROVED BY:	DRAWN BY WCE
DATE: 10-9-91		REVISED 10
boltswitch, inc. CRYSTAL LAKE, ILLINOIS 60014		DRAWING NUMBER O-1431