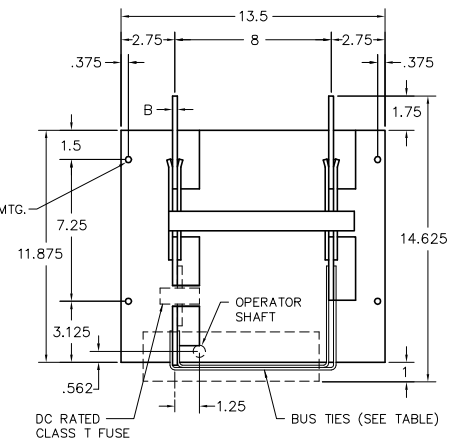
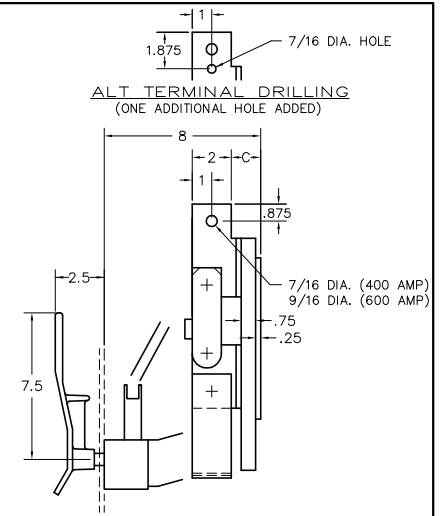


FRONT VIEW
800 & 1200 AMP

SIDE VIEW

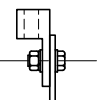


FRONT VIEW
200, 400 & 600 AMP



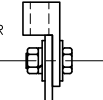
SIDE VIEW

RECOMMENDED LUG:
INTERNATIONAL CONNECTOR
#RU-250



RECOMMENDED BOLT:
3/8-16 x 1" LONG
200 & 400 AMP

RECOMMENDED LUG:
INTERNATIONAL CONNECTOR
#RU-350



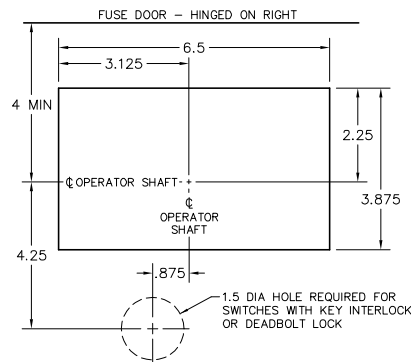
RECOMMENDED BOLT:
1/2-13 x 1-1/4" LONG
600 AMP

LUG MOUNTING

AMPS	CAT. NO.*	NET WT.	B	C	BUS TIES
800	T117WOL	55 LBS.	.312	1.406	(2) 1/8 X 3 COPPER
1200	T118WOL	57 LBS.	.375	1.406	(2) 3/16 X 3 COPPER

* SUFFIX "ST": SHUNT TRIP OPERATOR

AMPS	CAT. NO.	NET WT.	B	C	BUS TIES
200	T114WOL	21 LBS.	.187	1.406	(1) 1/8 X 1.5 COPPER
400	T115WOL	21 LBS.	.187	1.406	(2) 1/8 X 1.5 COPPER
600	T116WOL	23 LBS.	.250	1.500	(2) 1/8 X 2 COPPER

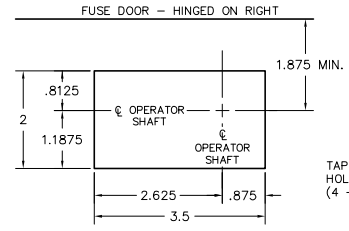


800 & 1200 AMP FRONT CUT-OUT

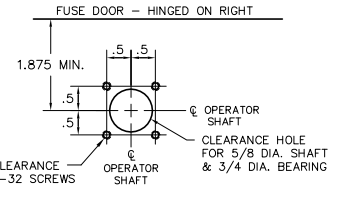
THIS RECTANGULAR CUT-OUT IS REQUIRED WHEN USING OPTIONAL E.U.S.E.R.C. PAKLOCK CLIP

SHUNT TRIP OPERATOR
SHUNT TRIP OPERATOR IS AVAILABLE FOR 800 & 1200 AMP SWITCHES ONLY. STANDARD COIL IS RATED 120 VAC. ALTERNATE RATINGS ARE 24, 48, 125 OR 250 VDC.

KEY INTERLOCK SPECIFICATIONS
KEY INTERLOCK SPECIFICATIONS FOR SWITCHES EQUIPPED WITH KEY INTERLOCK PROVISIONS ARE:
- .375 BOLT PROJECTION WHEN WITHDRAWN
- KIRK TYPE B
- SUPERIOR TYPE B6003



RECOMMENDED
200, 400 & 600 AMP FRONT CUT-OUTS
FOR SWITCHES EQUIPPED WITH KEY INTERLOCK, REFER TO DRAWING NO. 0-1023



ALTERNATE

**200-1200 AMP, 1-P (DOUBLE BREAK)
125 VDC, CLASS T FUSIBLE SWITCHES**

SCALE:	APPROVED BY:	DRAWN BY JAE
DATE: 8-18-94		REVISED 4

boltswitch, inc.
CRYSTAL LAKE, ILLINOIS 60014

DRAWING NUMBER
0-1549

REV 4 10-3-00 JAE TERMINALS CHANGED ON 800-1200A (WAS 2-HOLE)
REV 3 6-1-00 JAE KEY INTERLOCK REVISED DUE TO NEW ST-8
REV 2 7-10-97 RME 800-1200 A. FRONT CUT-OUT ADDED
REV 1 4-15-96 JAE OPT. ST ADDED TO 800 & 1200 AMP SWITCHES